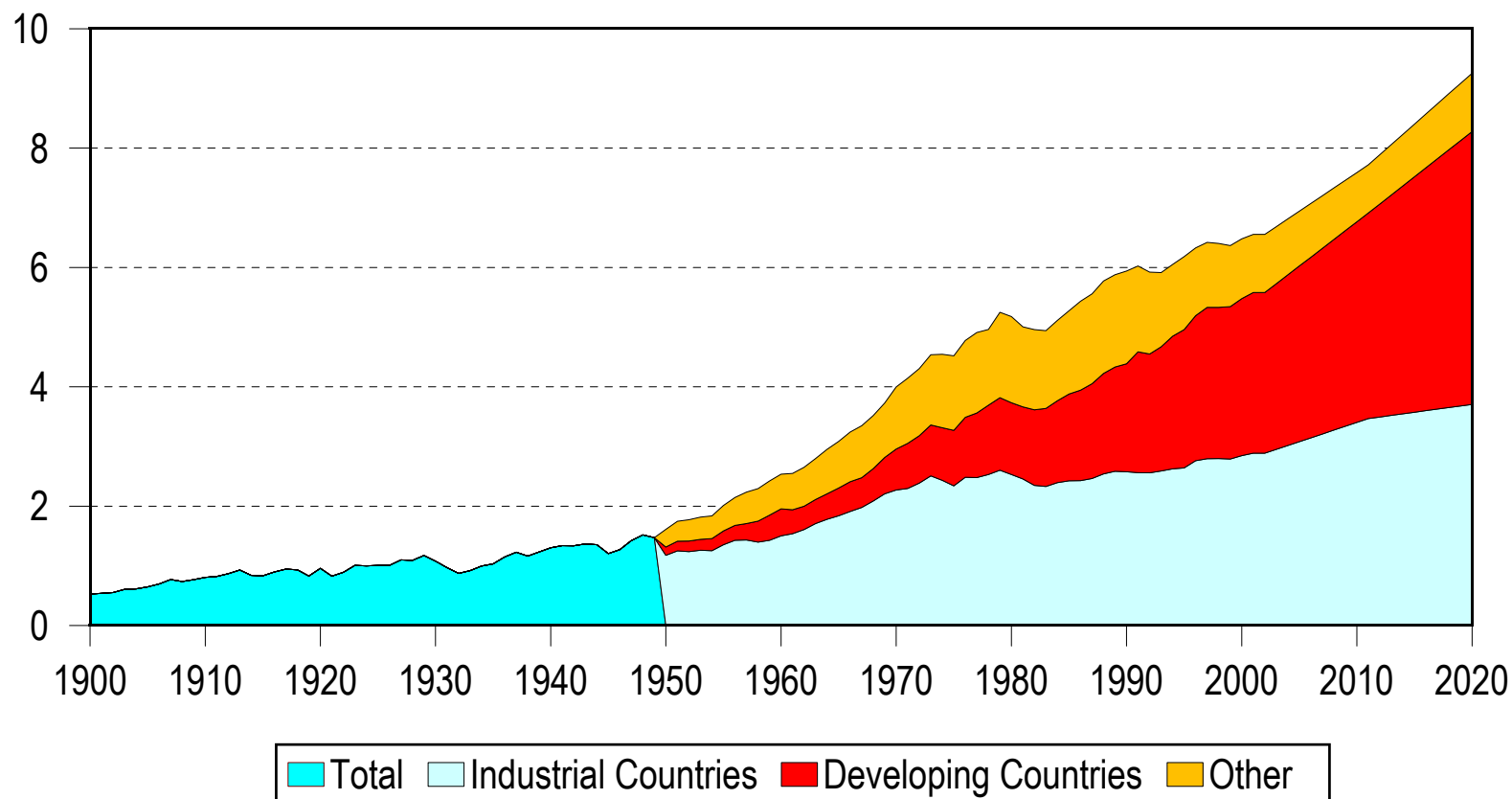


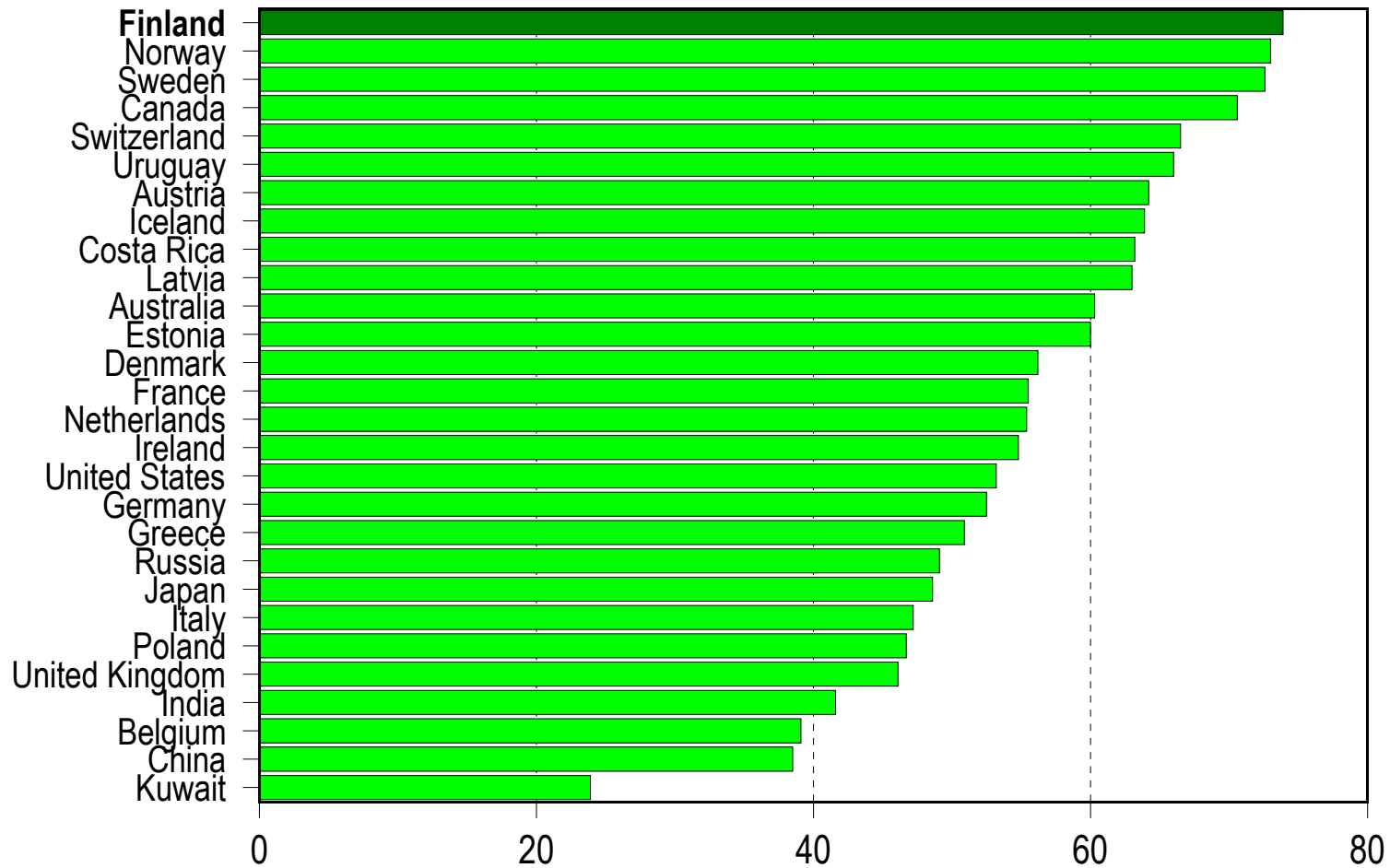


World carbon dioxide emissions from fossil fuels, with forecasts until 2020 (billion tonnes)



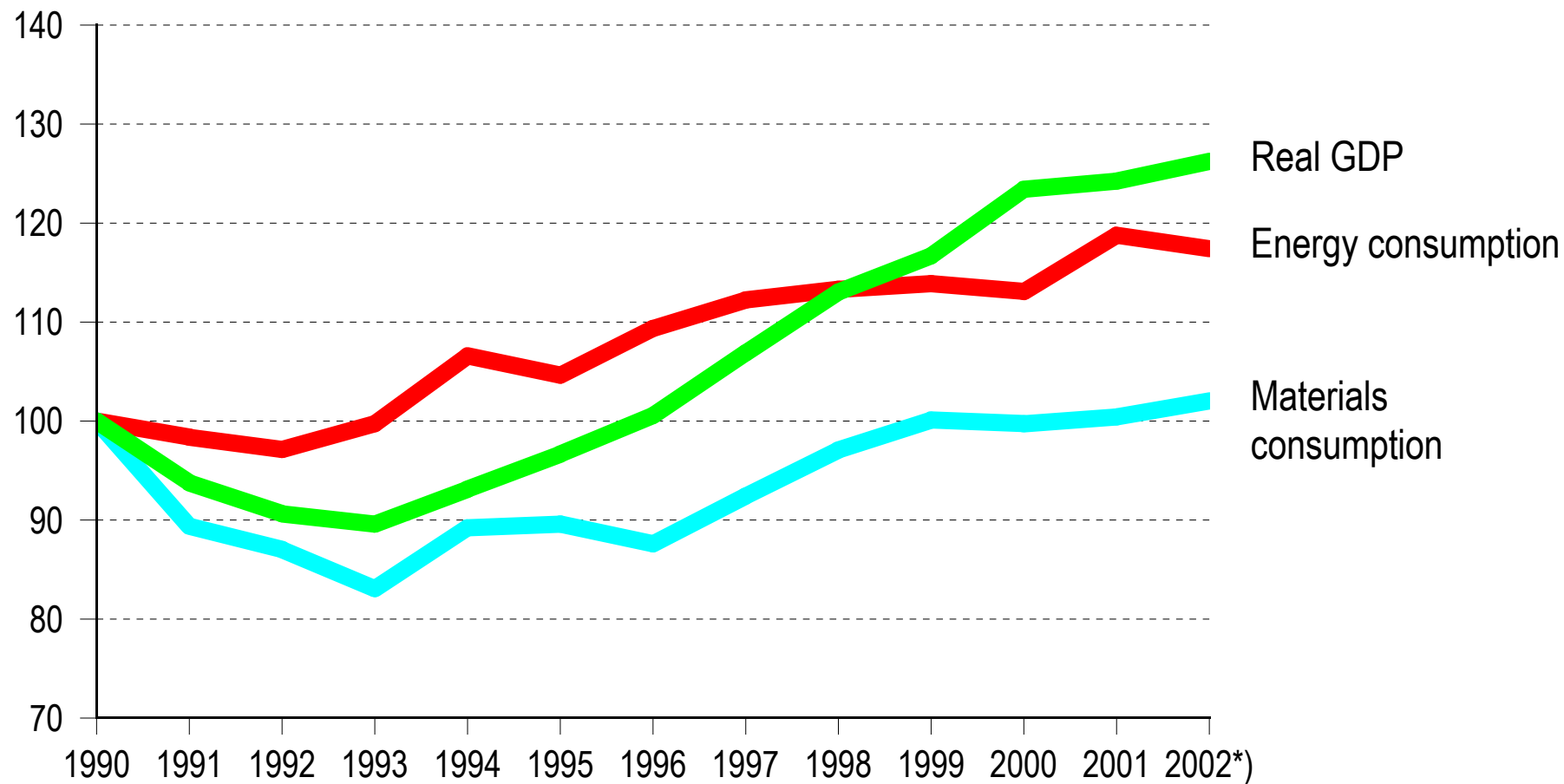


Environmental sustainability index (ESI) for designated countries 2002



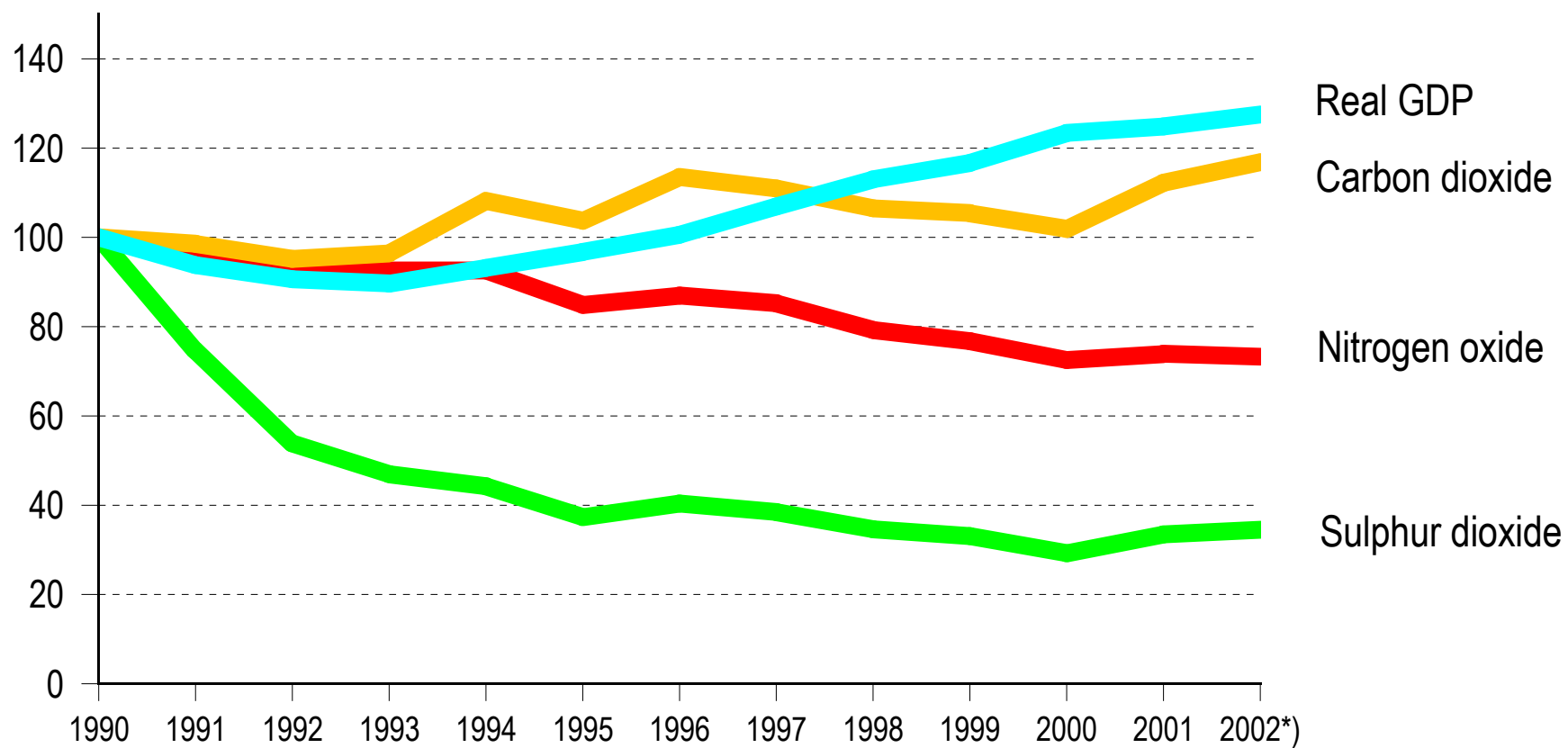


Trends in real GDP and the consumption of energy and materials in Finland (1990=100)



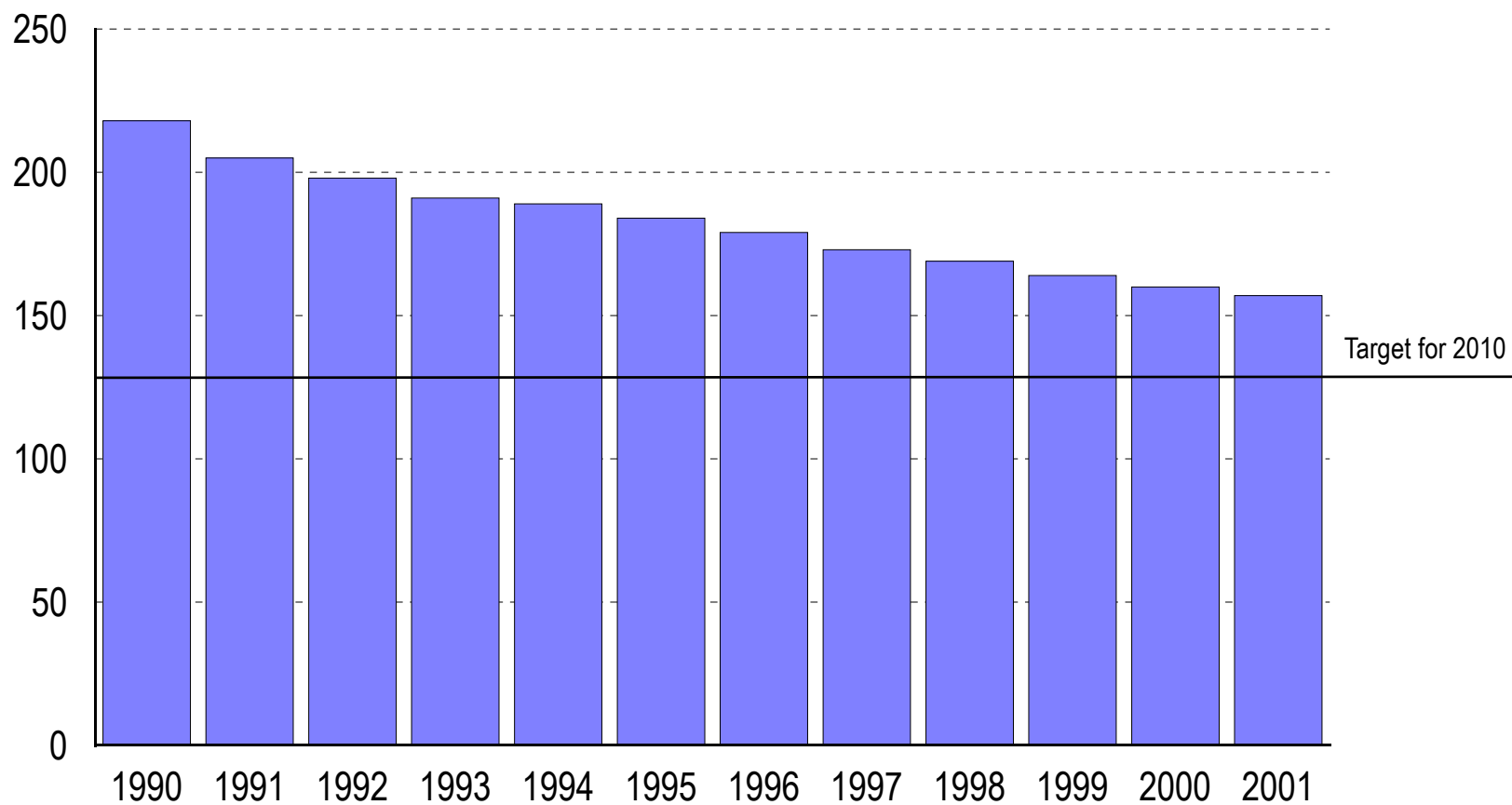


Trends in real GDP and atmospheric emissions in Finland (1990=100)



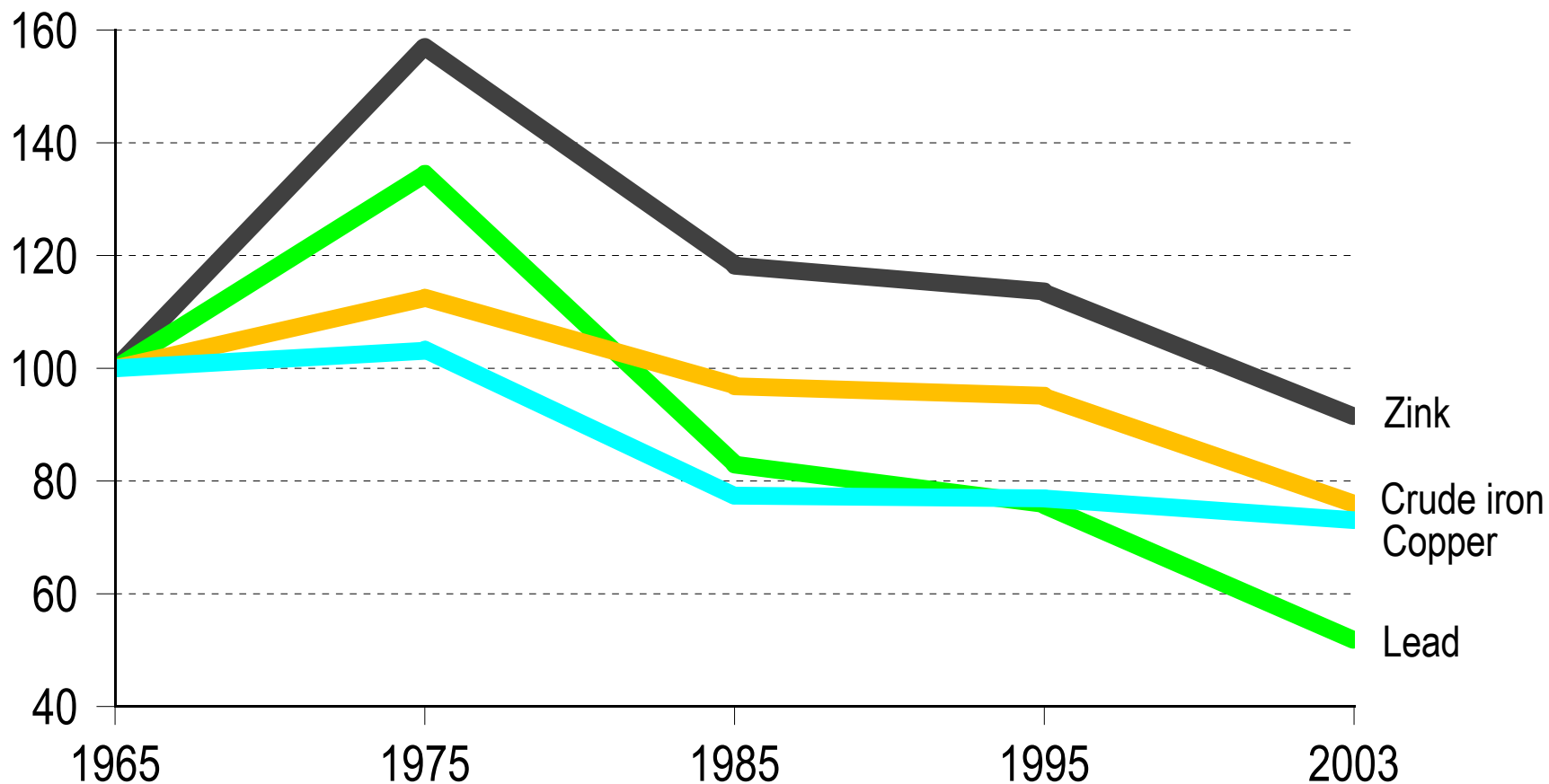


Finland's NMVOC (Non-Methane Volatile Organic Compounds) discharges and target for 2010 (tonnes)



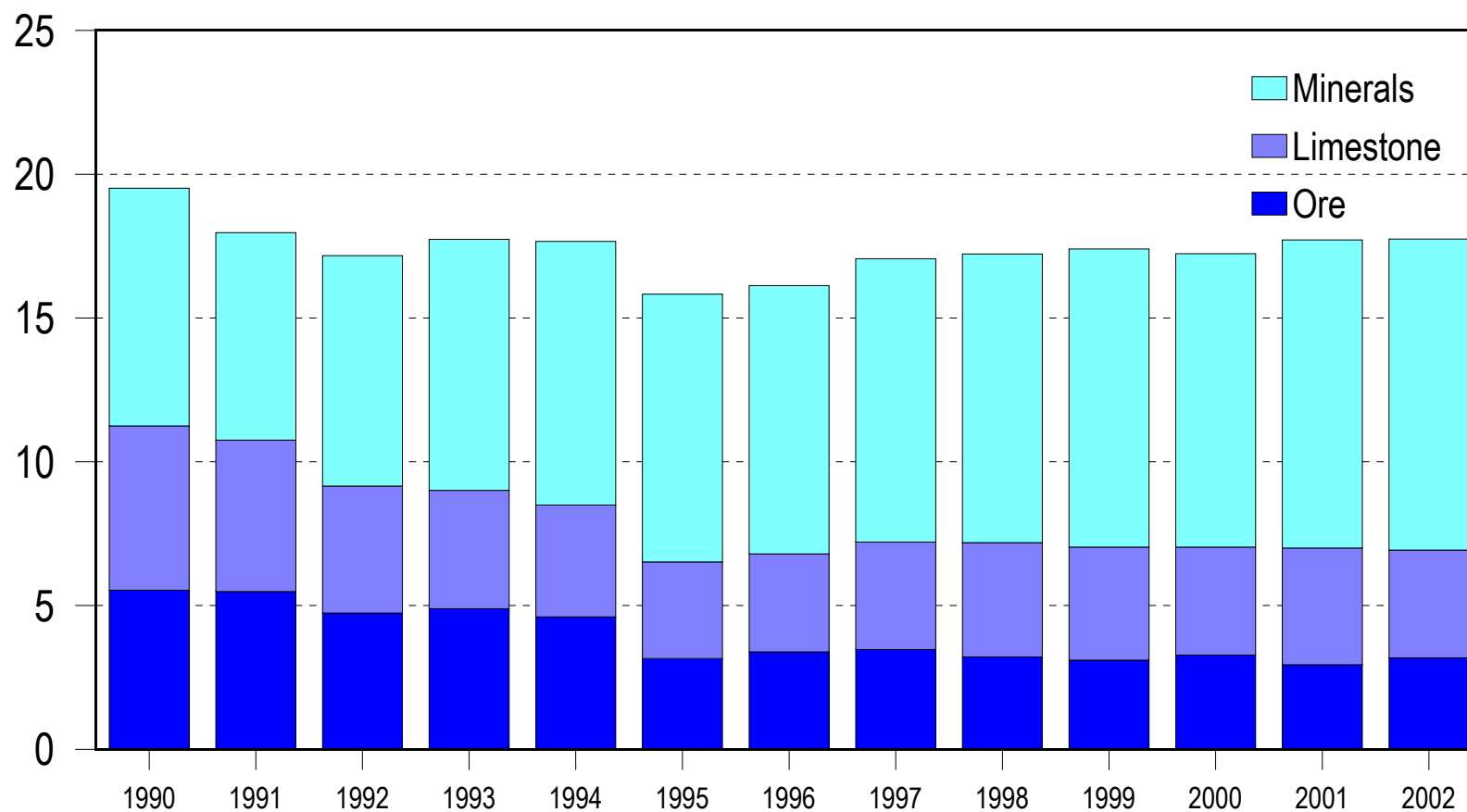


Trends in world market prices of selected metals (1965=100)



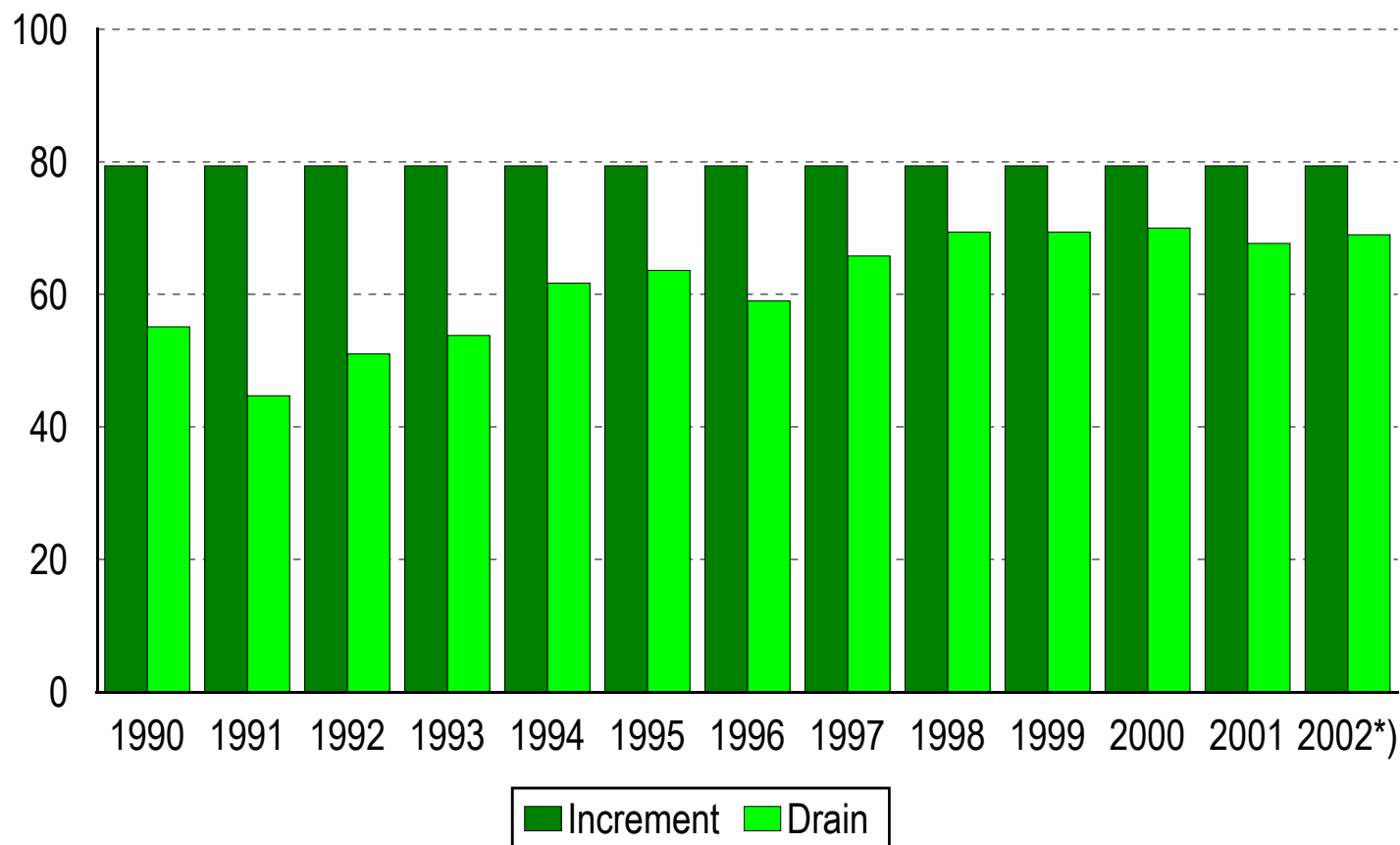


Mining of ores, industrial minerals and quarrying of limestone in Finland in 1990-2002 (million tonnes)



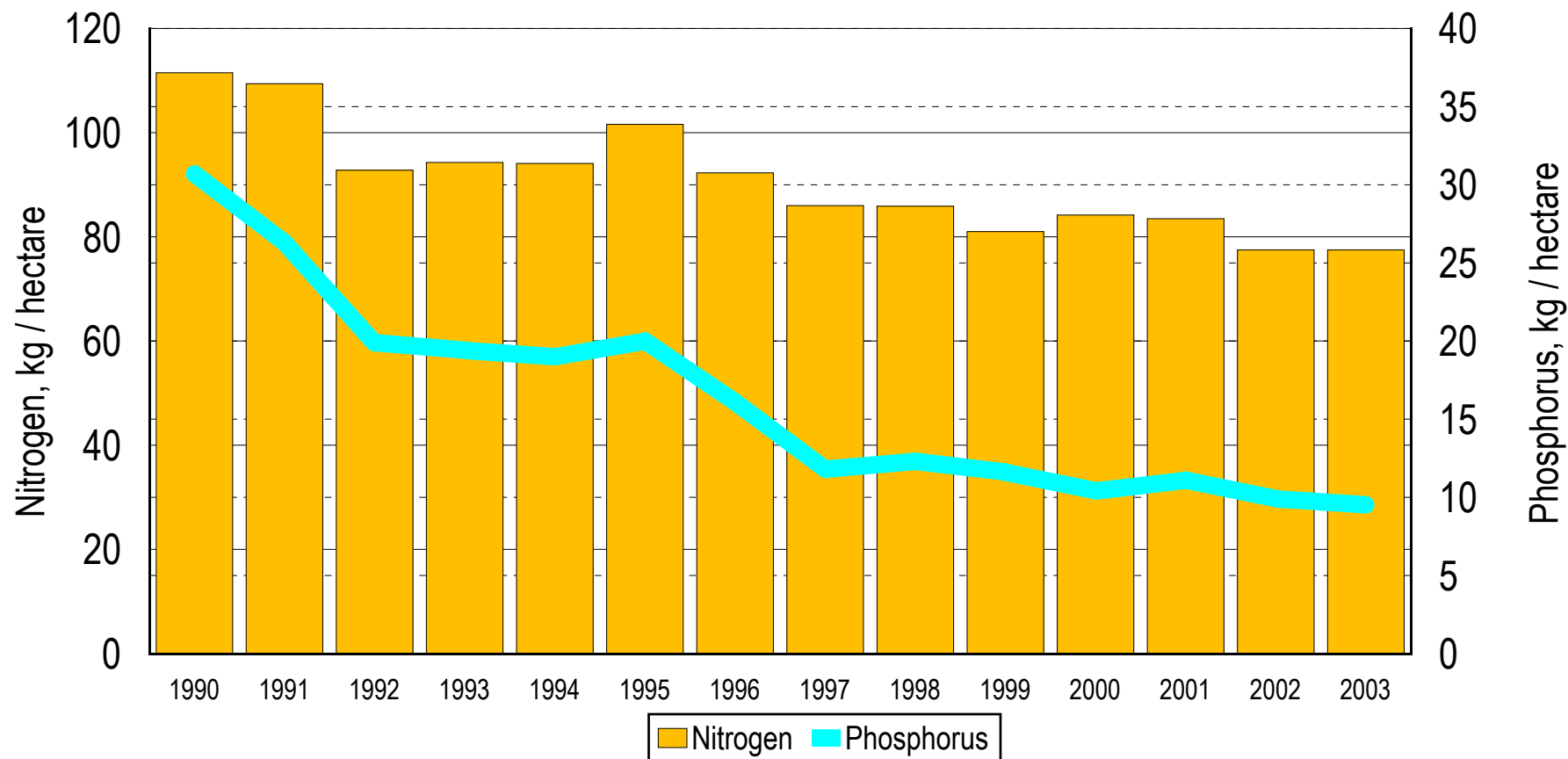


Growing stock increment and drain (million solid cubic metres)



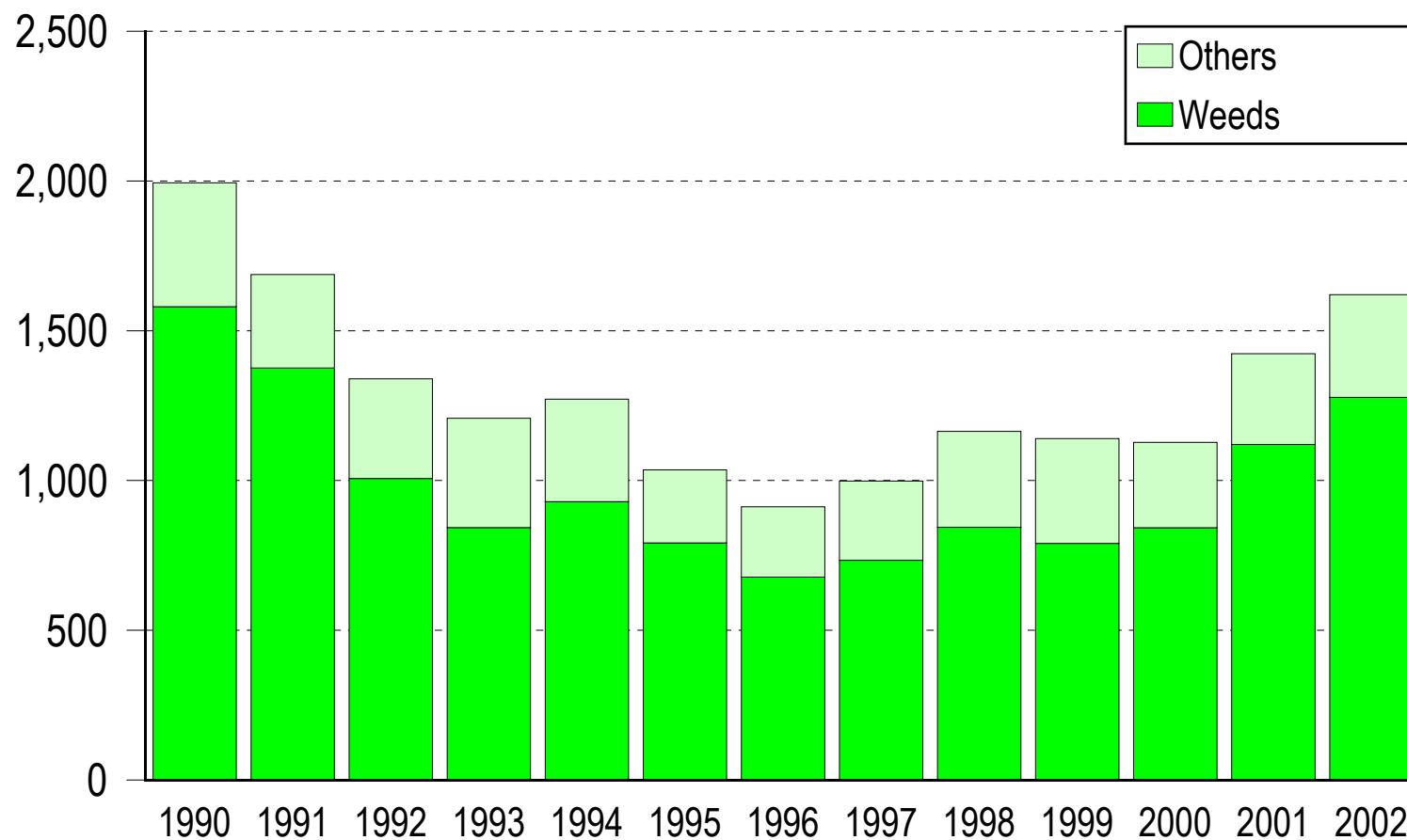


Fertiliser use in agriculture





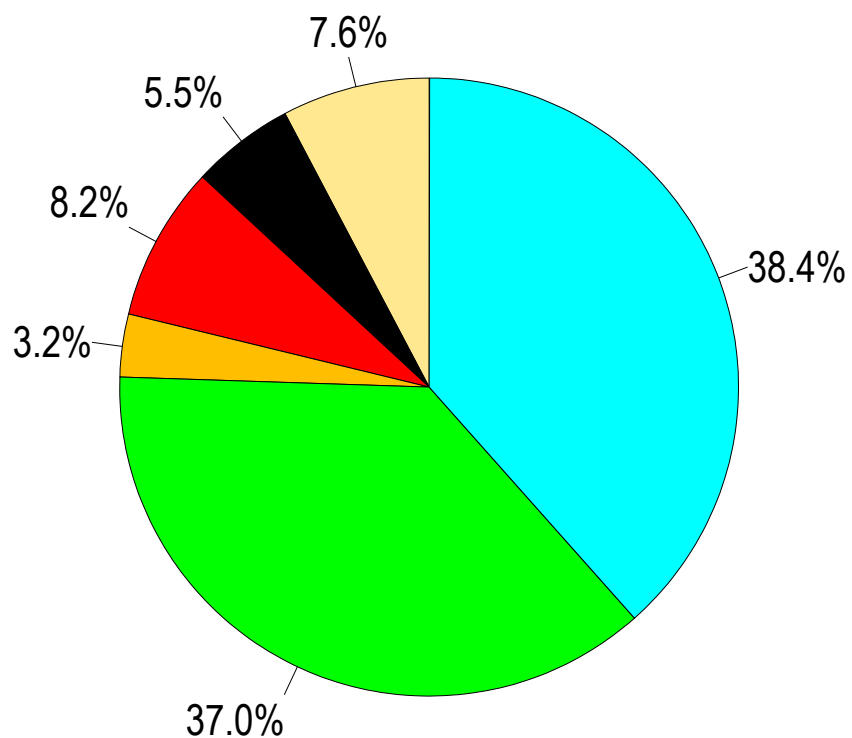
Use of pesticides in agriculture (1000 kg of active ingredient)



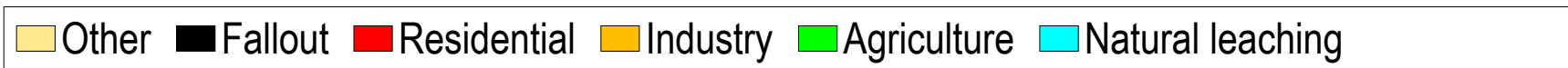
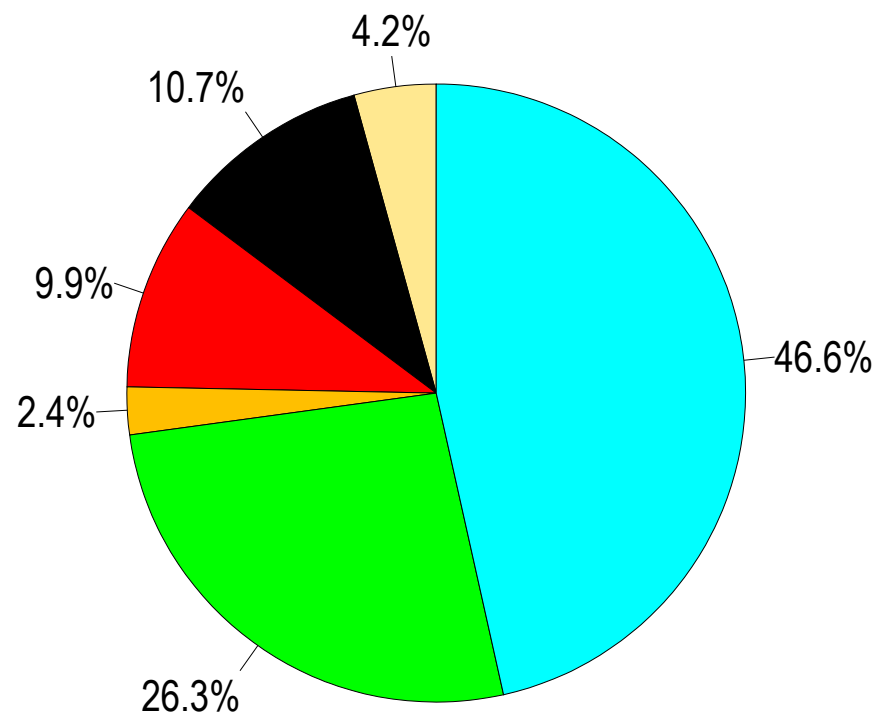


Sources of water pollution and natural leaching

Phosphorus

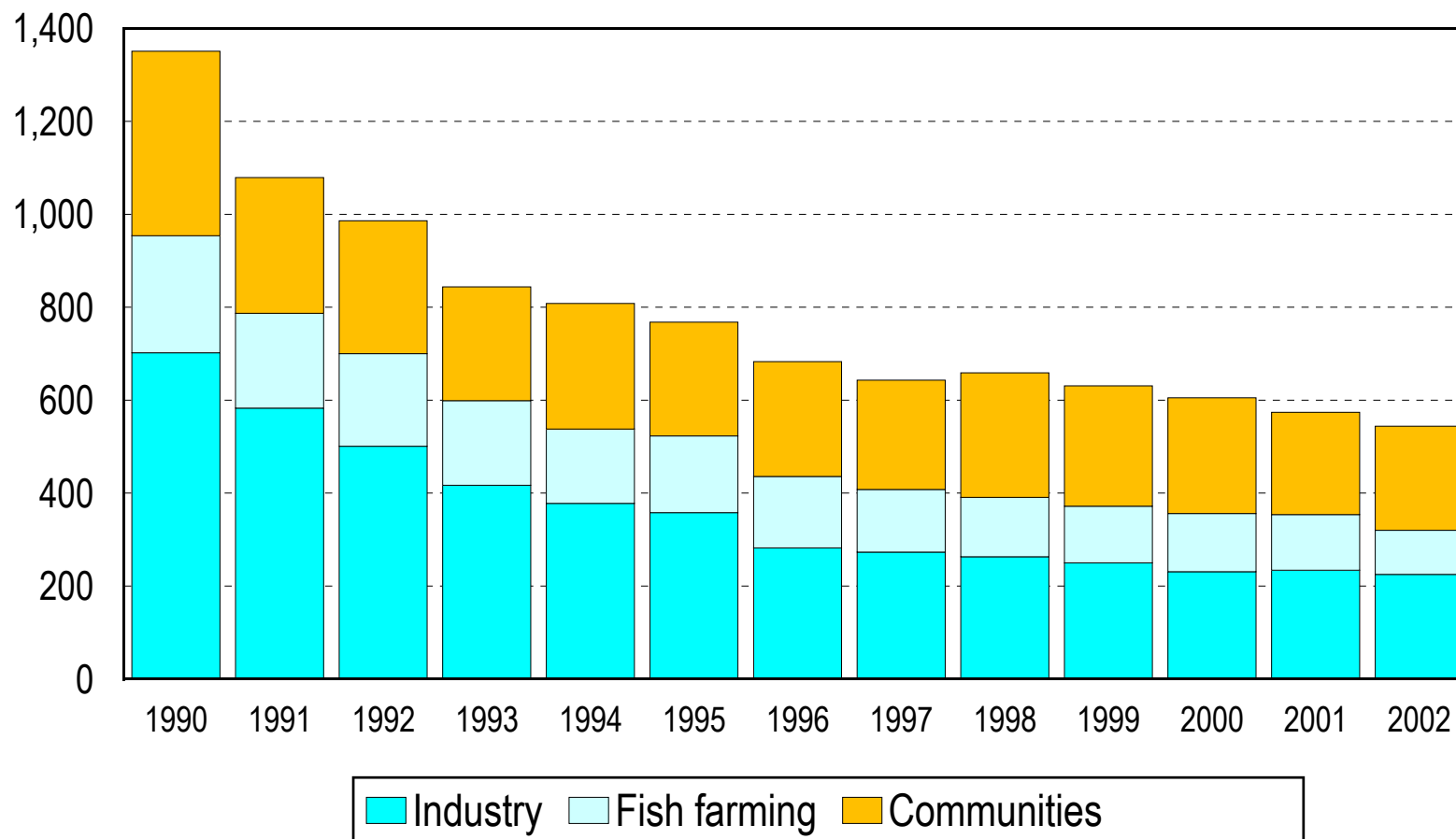


Nitrogen



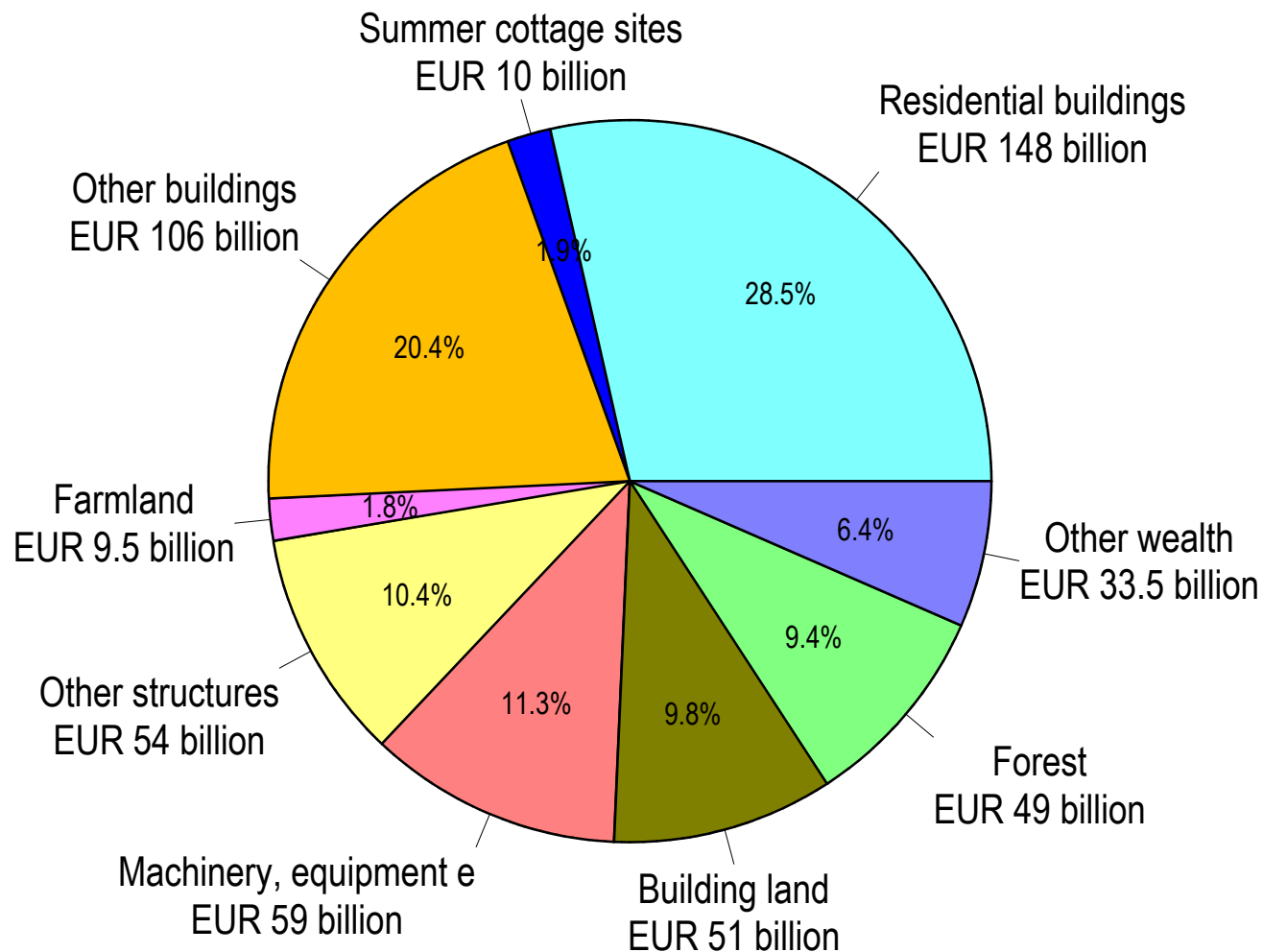


Finland's phosphorus discharge from industry, communities and fish farming sources into waterways (tonnes)



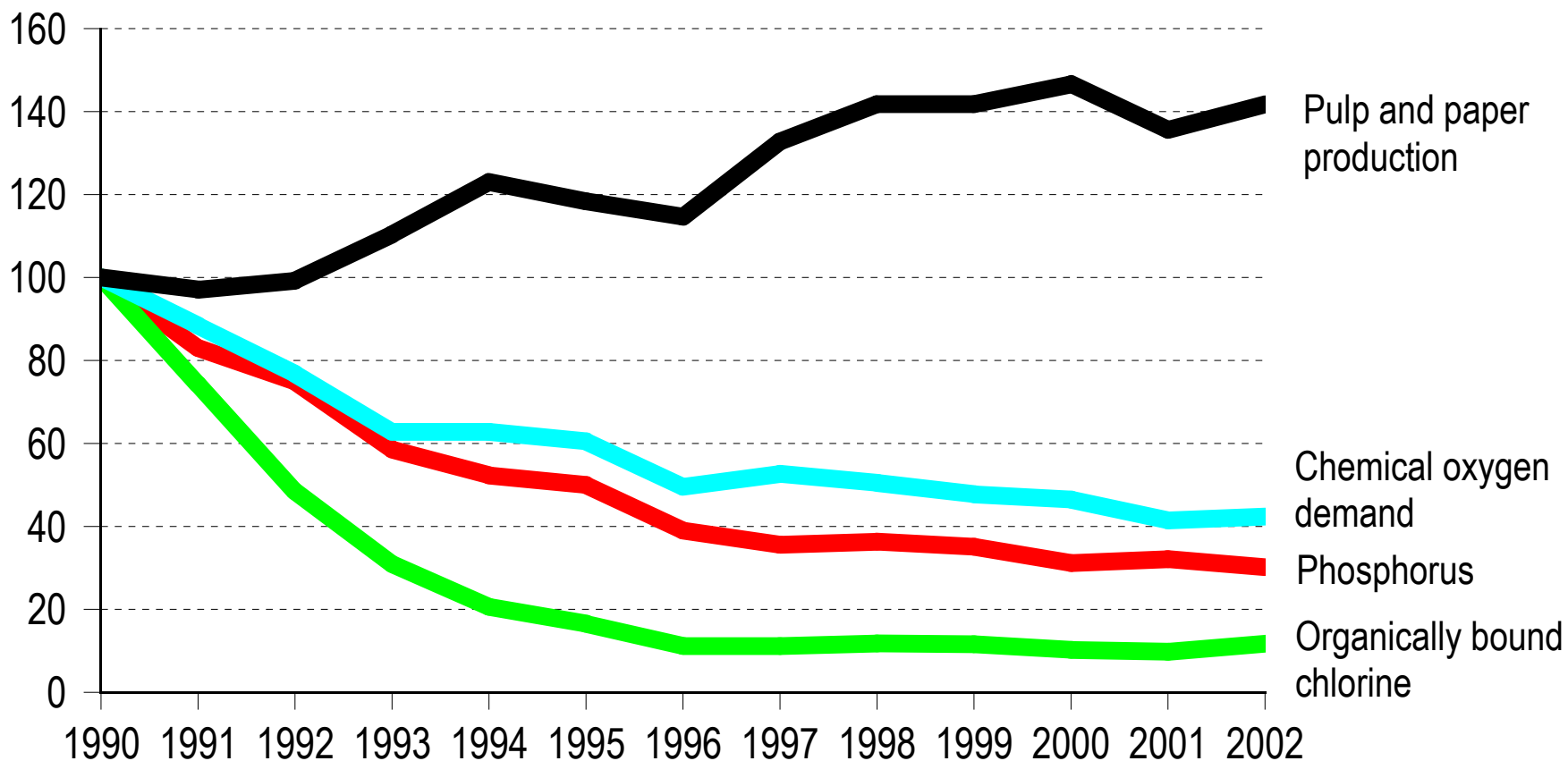


Breakdown of Finland's national wealth in 2001 (EUR billion)



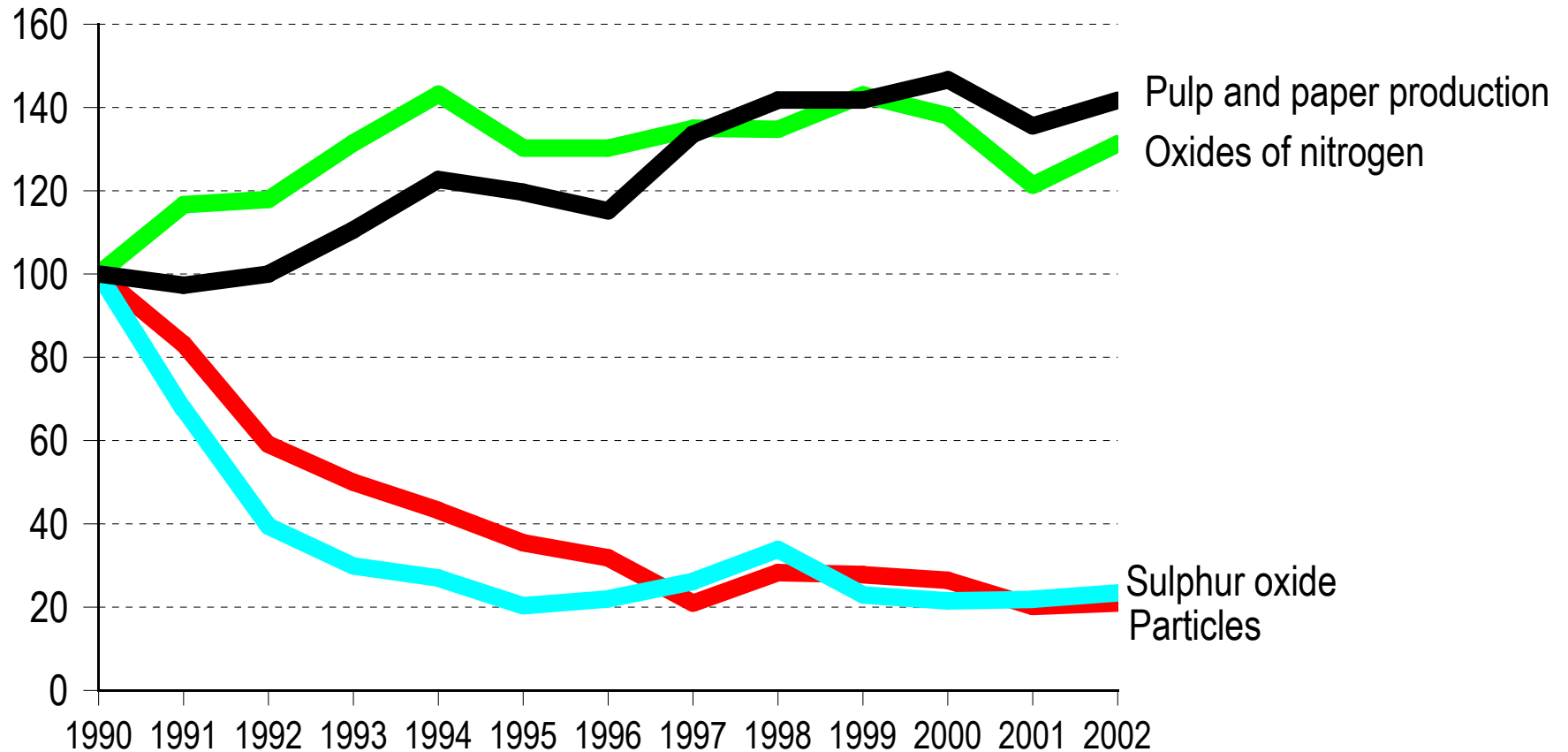


Pulp and paper industry production and load on the rivers and lakes (1990=100)



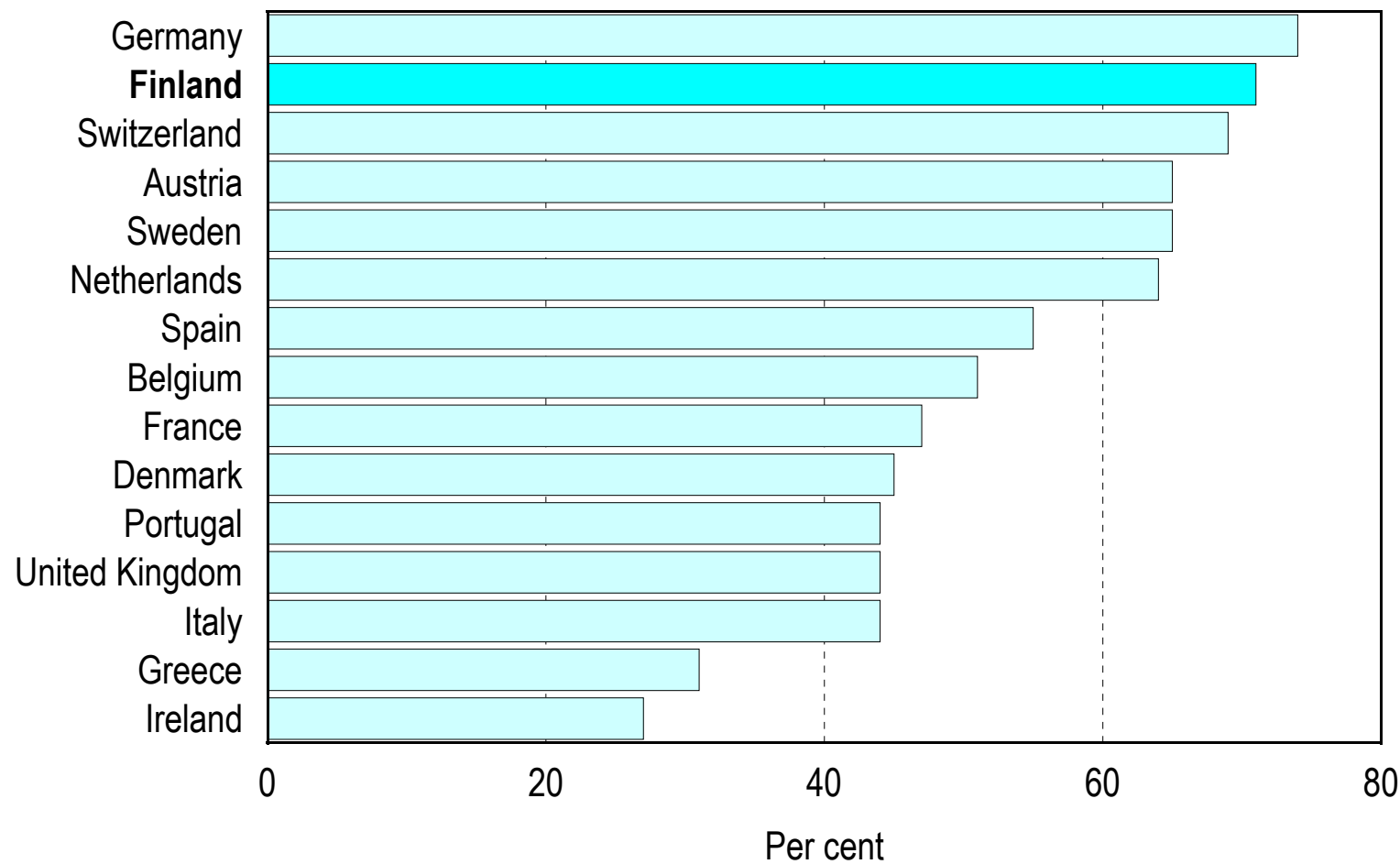


Pulp and paper industry production and emissions into the atmosphere (1990=100)



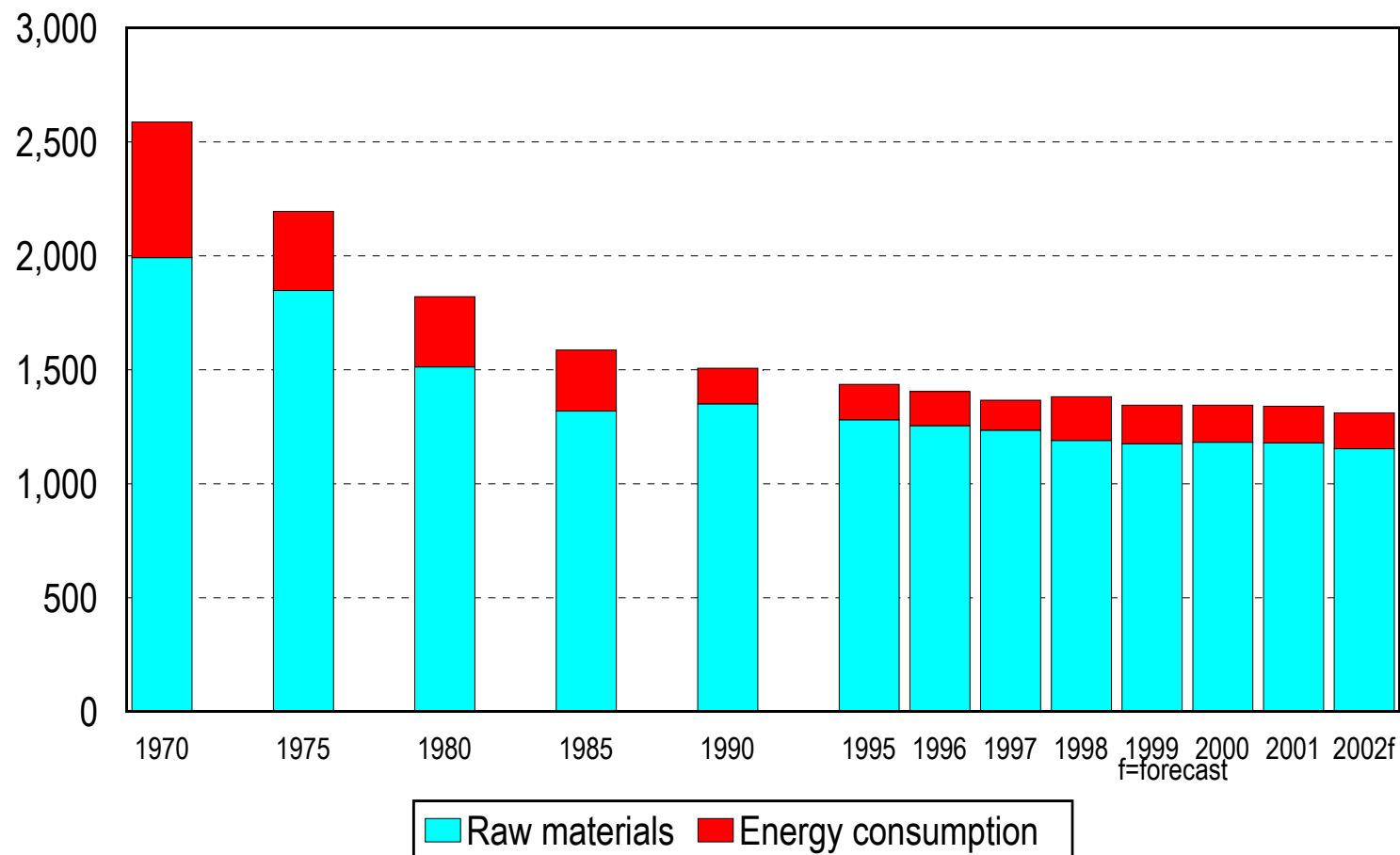


Recovery of waste paper in different countries 2001



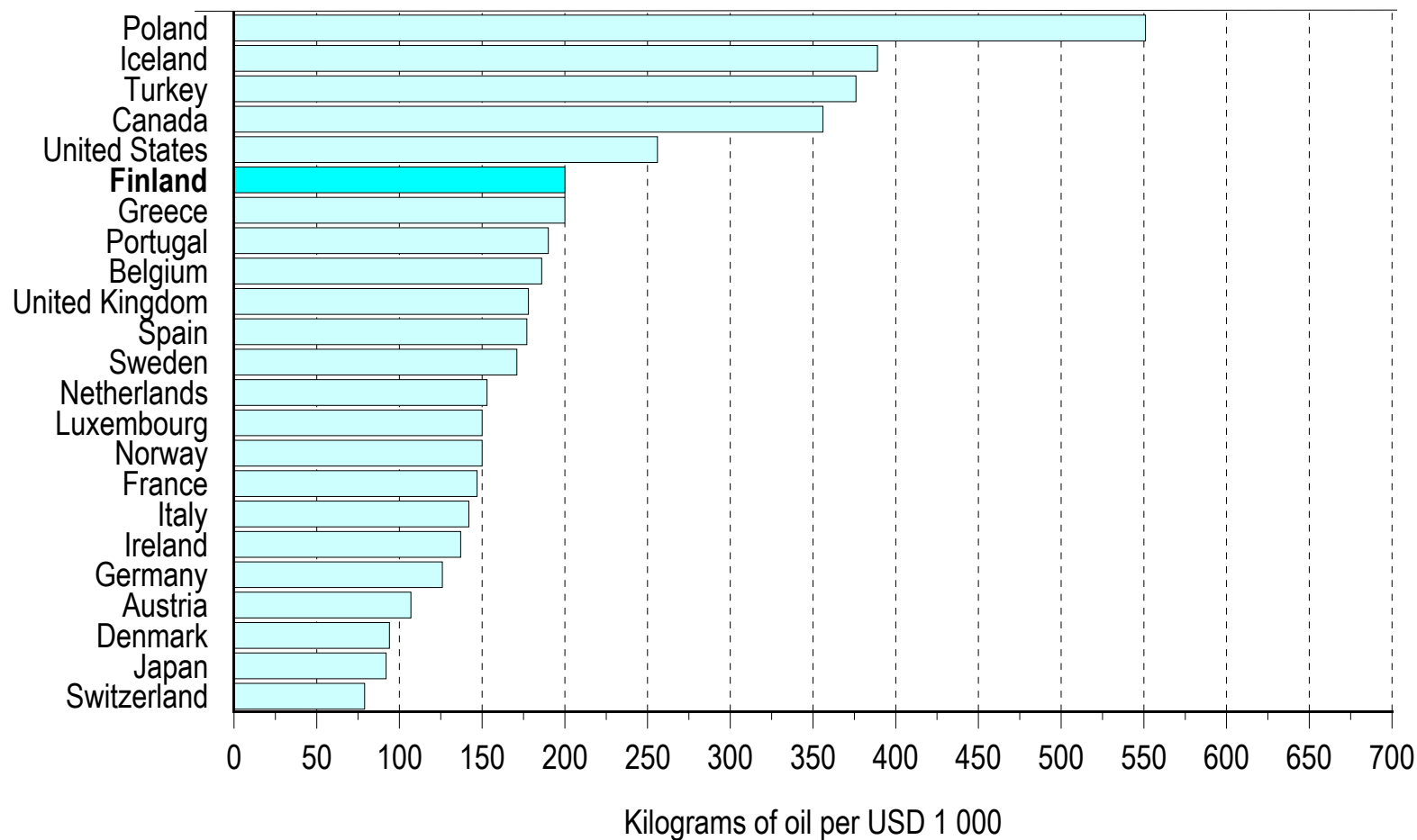


Characteristic emissions of carbon dioxide in metal production (kilograms of carbon dioxide per tonne of metal produced)



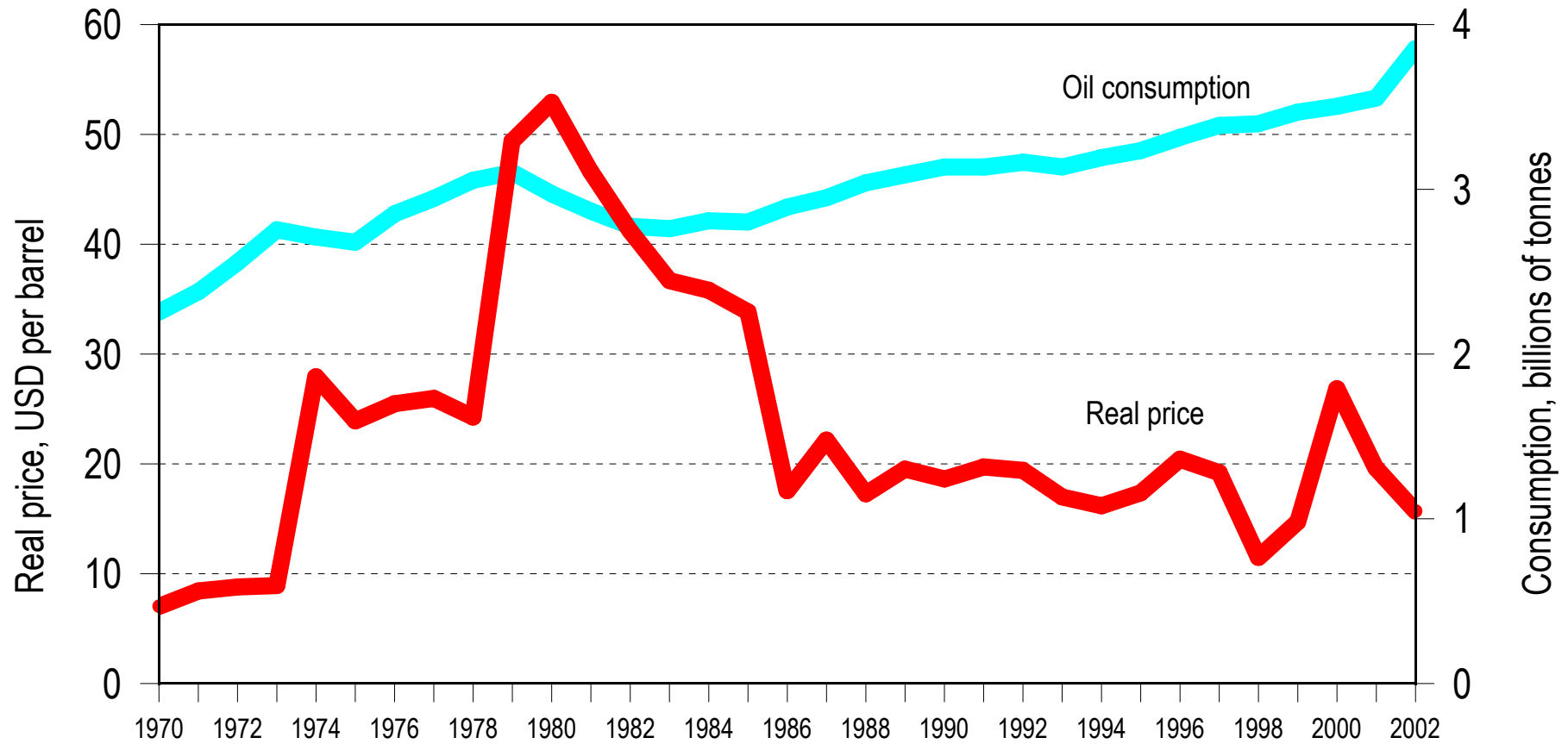


Total energy consumption in selected countries by GDP unit in 2000



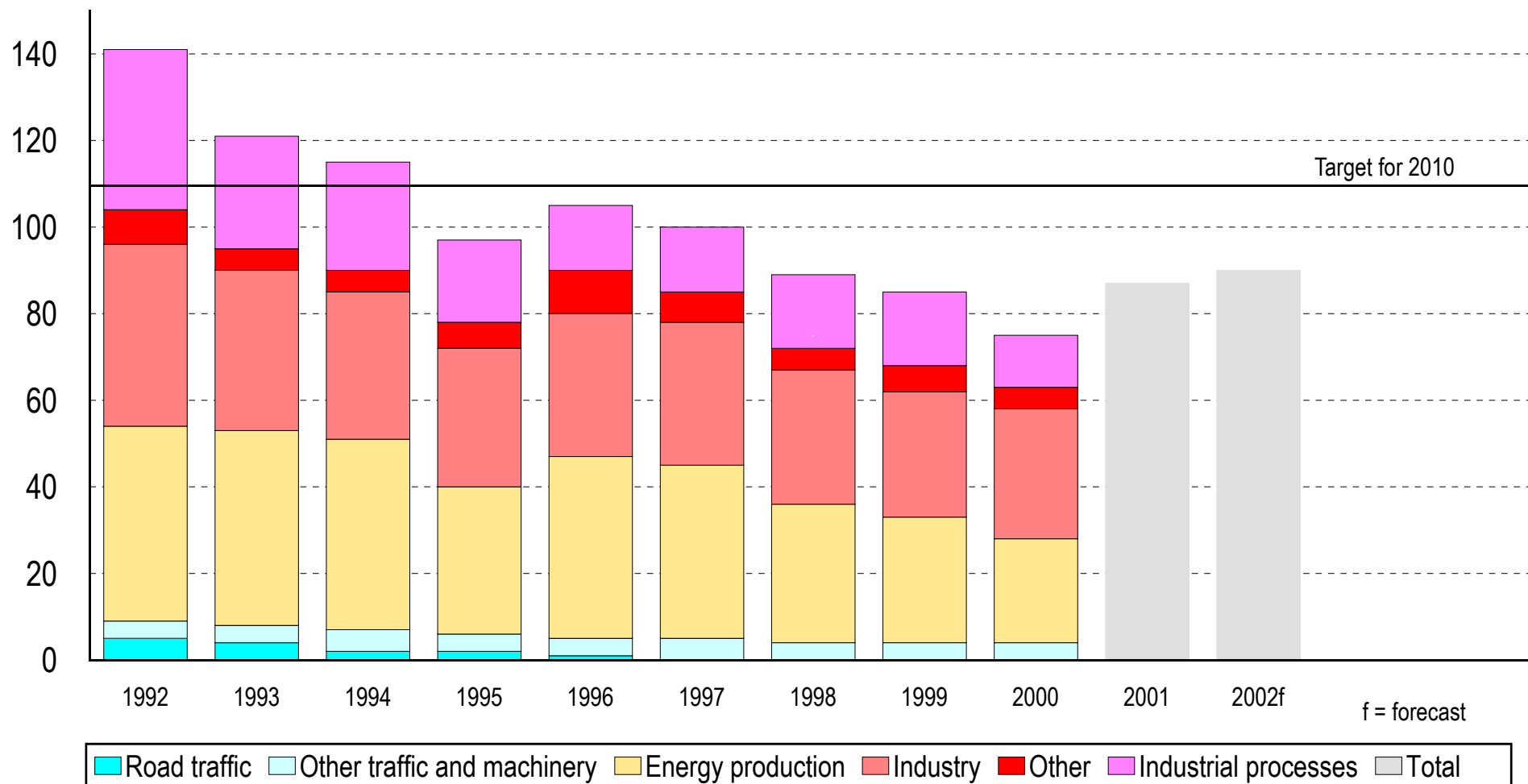


World oil consumption and real world market price



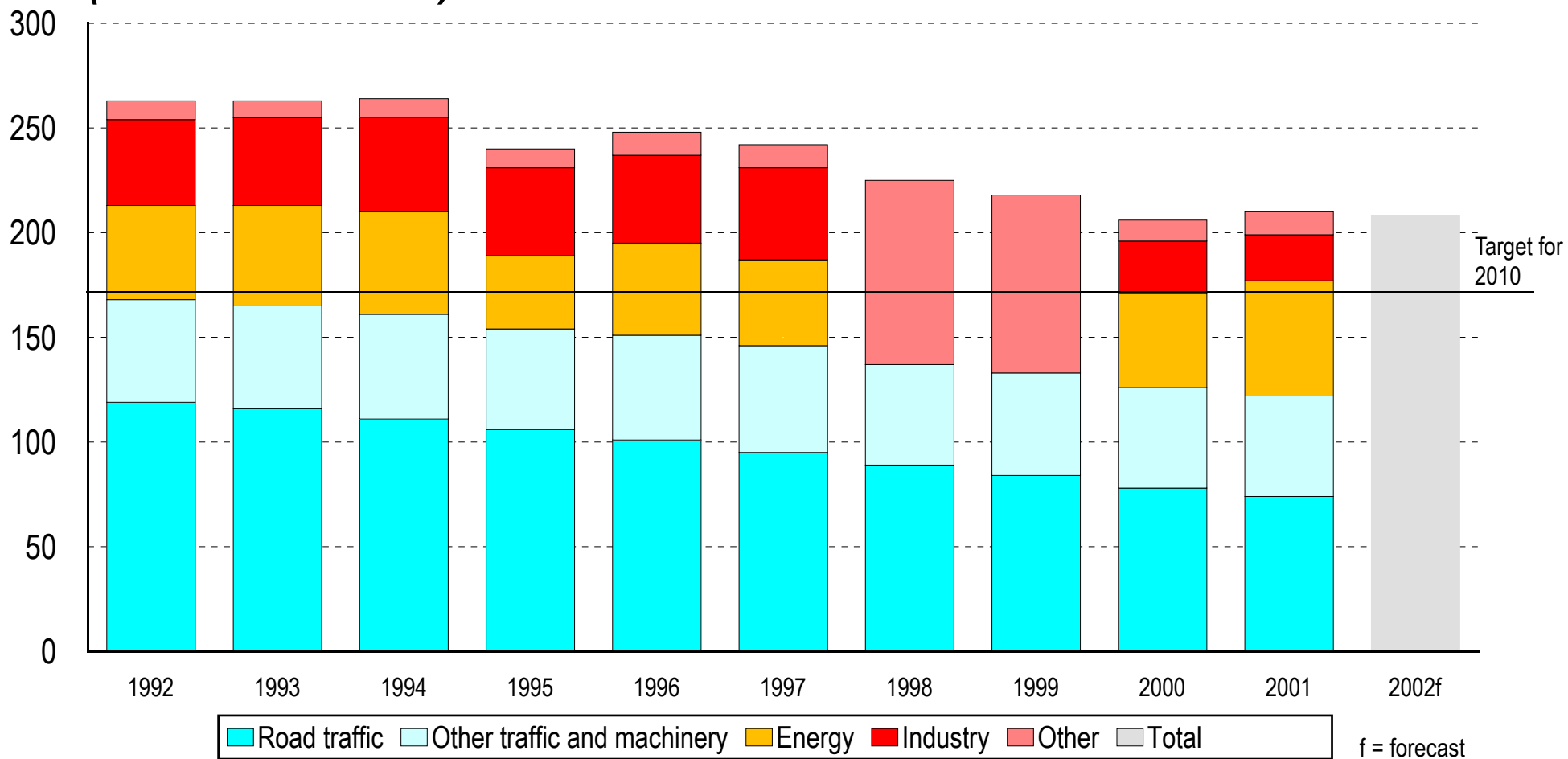


Finland's sulphur emissions and reduction targets for 2010 (thousand tonnes of sulphur dioxide)



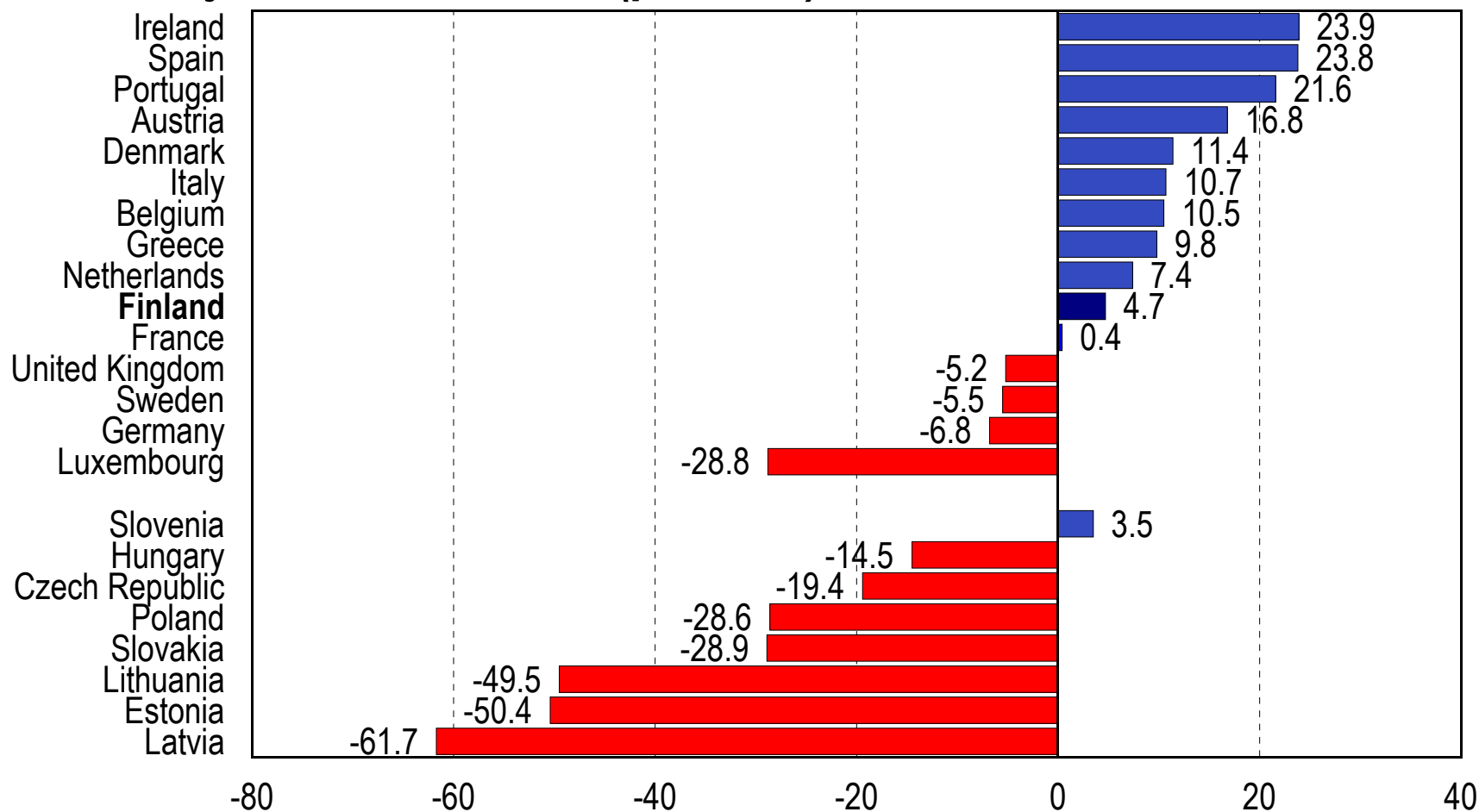


Finland's nitrogen oxides emissions and reduction targets for 2010 (thousand tonnes)



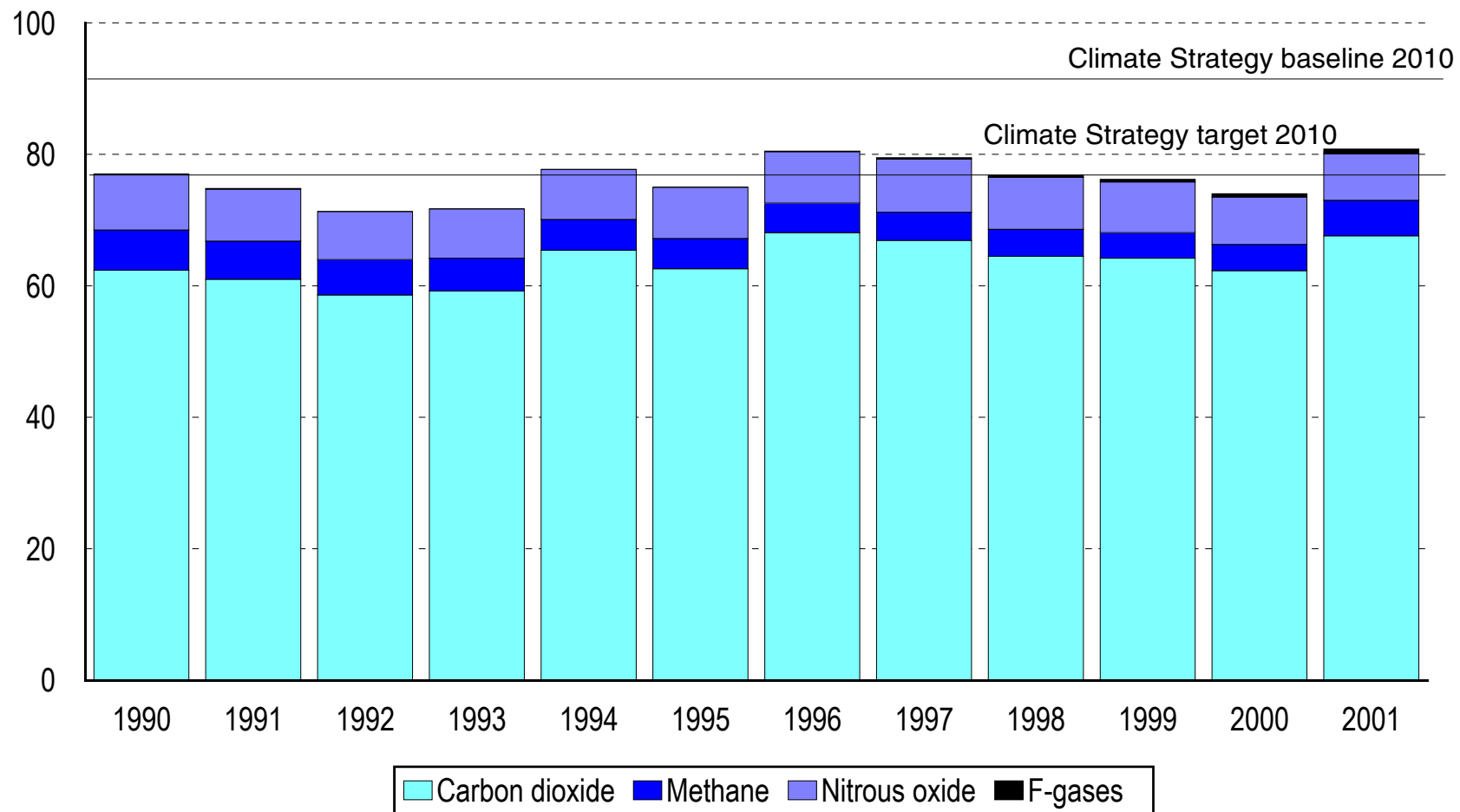


EU member states in relation to Kyoto targets in 2001 and new member states in relation to Kyoto levels in 2010 (per cent)



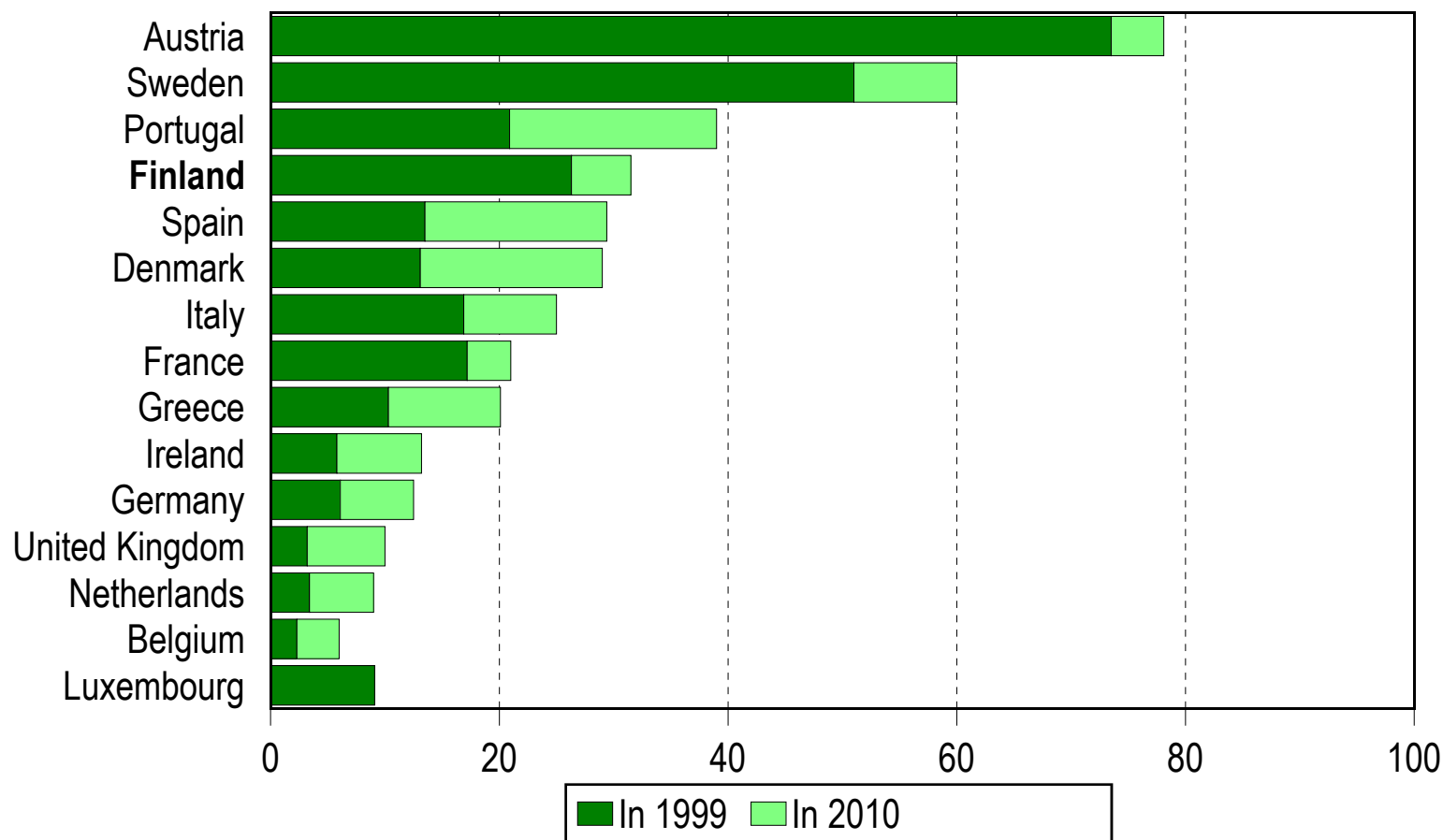


Finland's greenhouse gas emissions (million equivalent carbon dioxide tonnes)



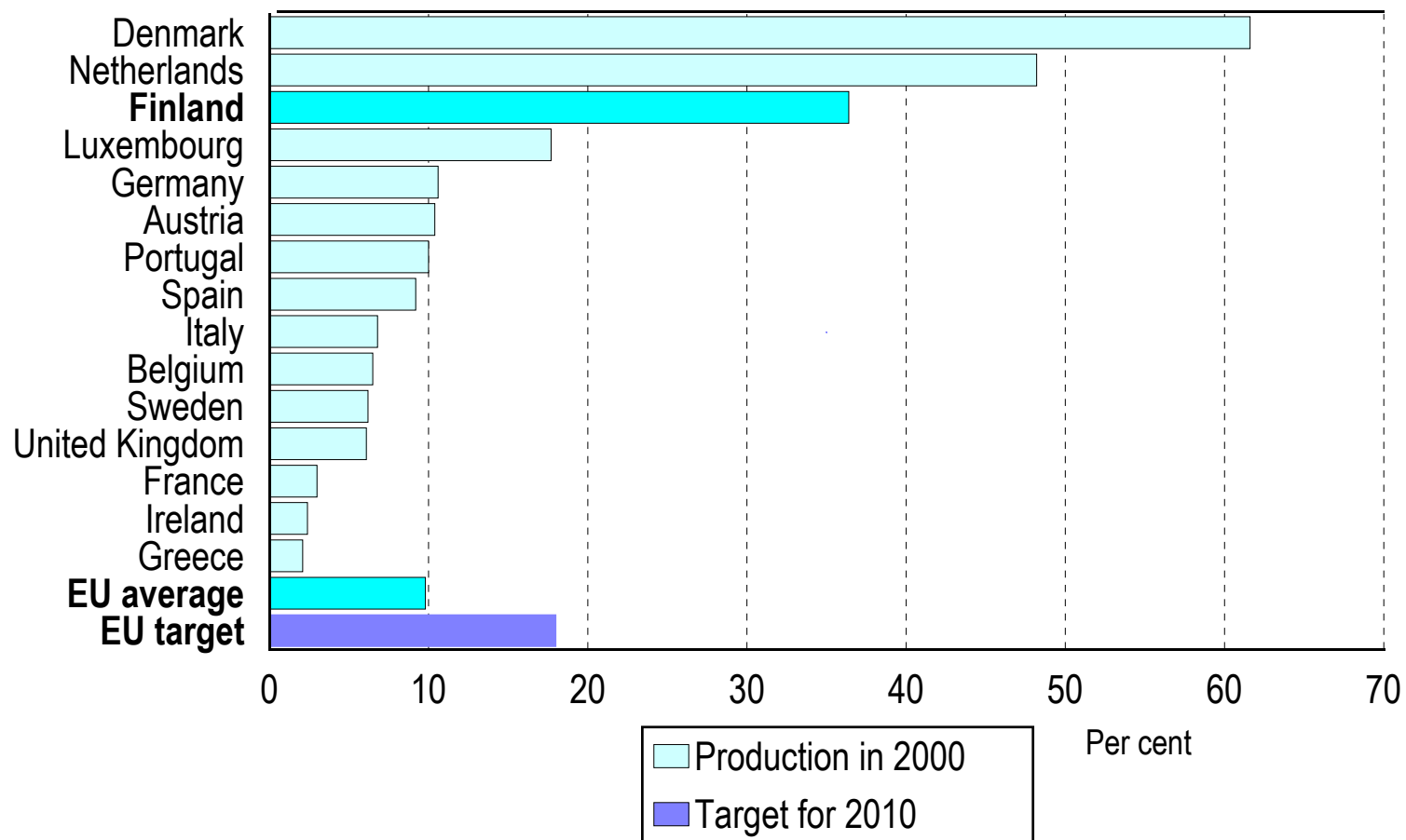


Renewable energy sources as a proportion of electricity consumption in 1999 and the target for 2010 (per cent)



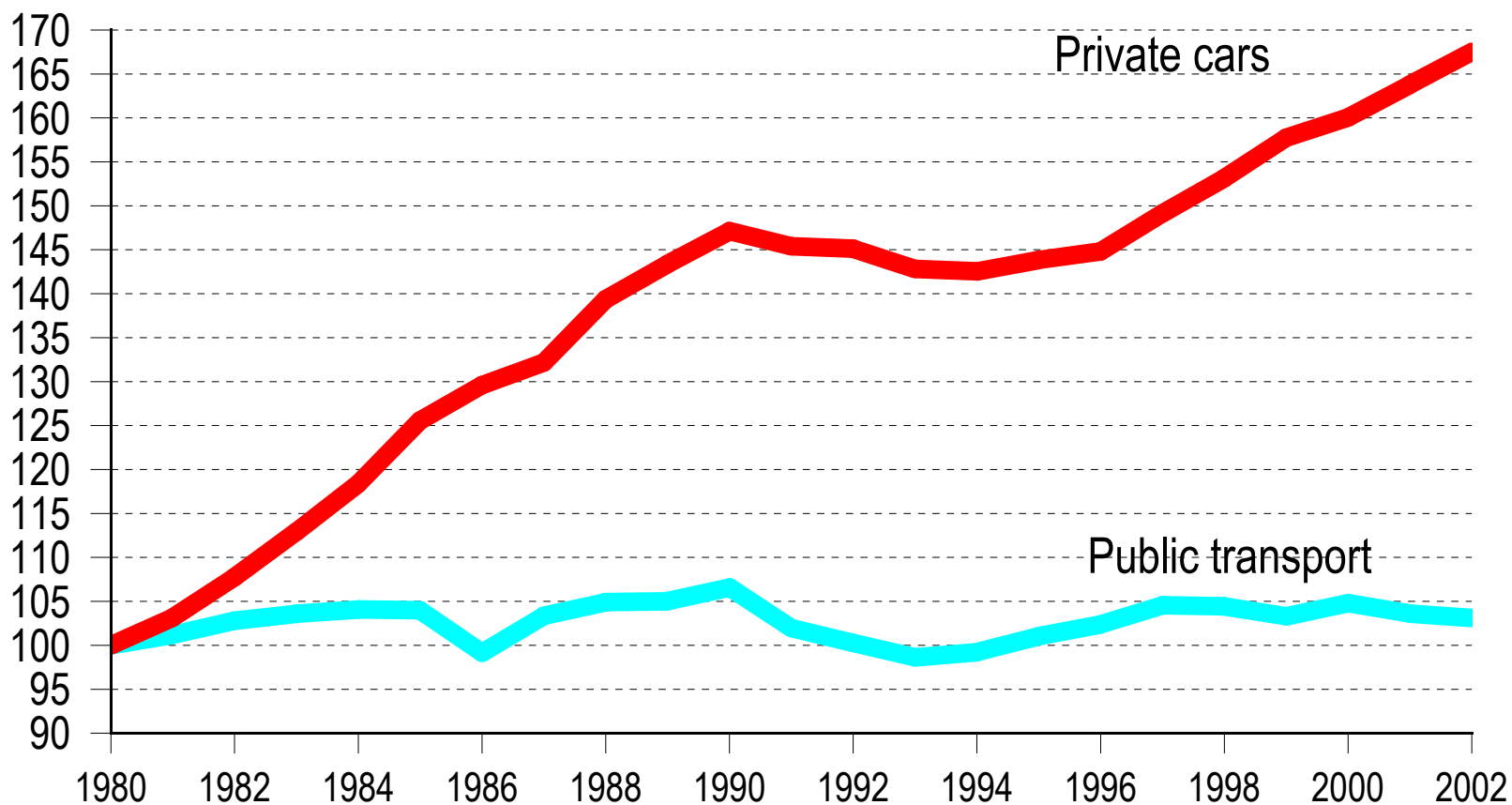


Percentage of combined heat and power production (CHP) in EU countries in 2000



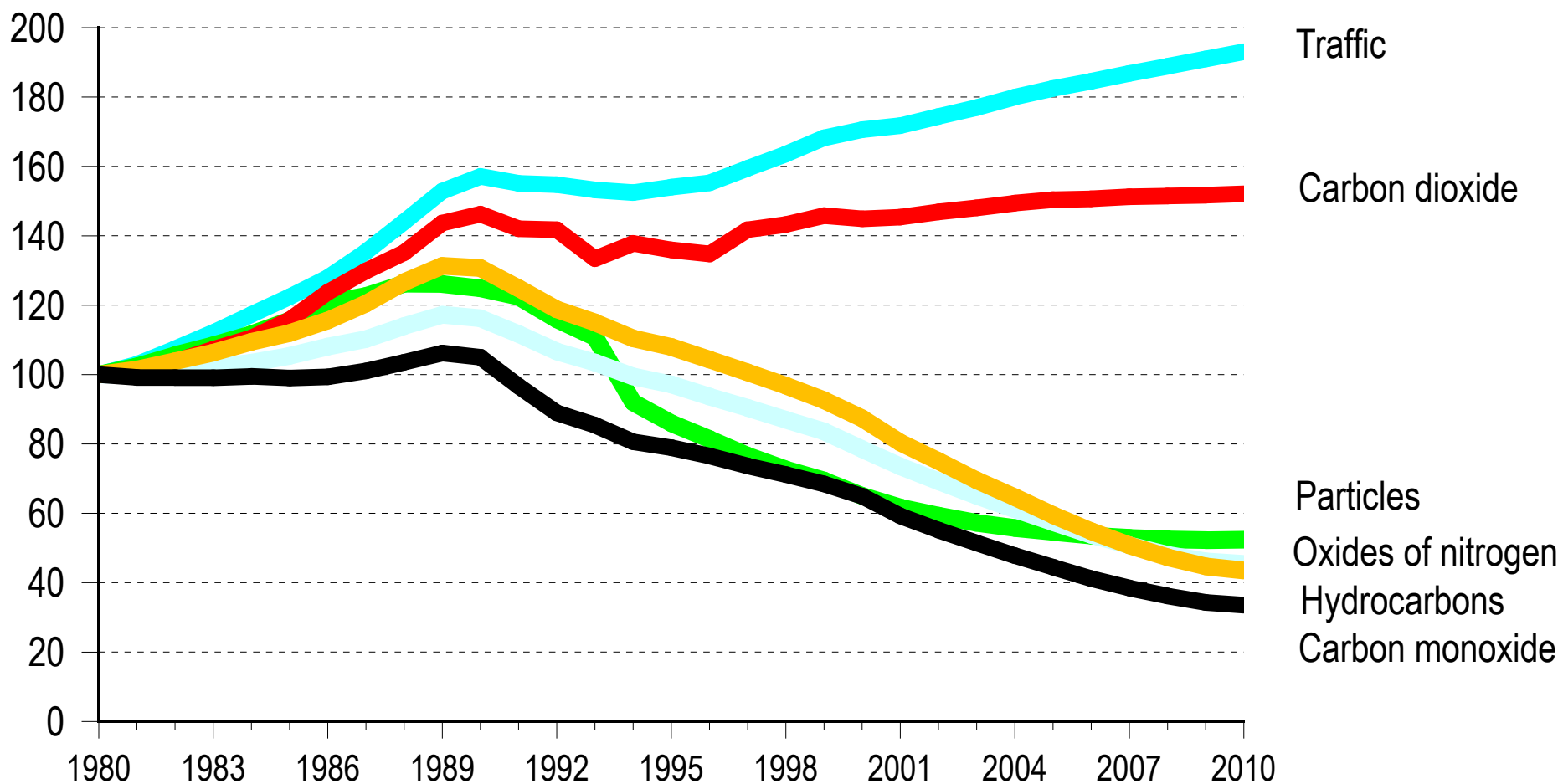


Trends in the use of public transport and private cars (1980=100)



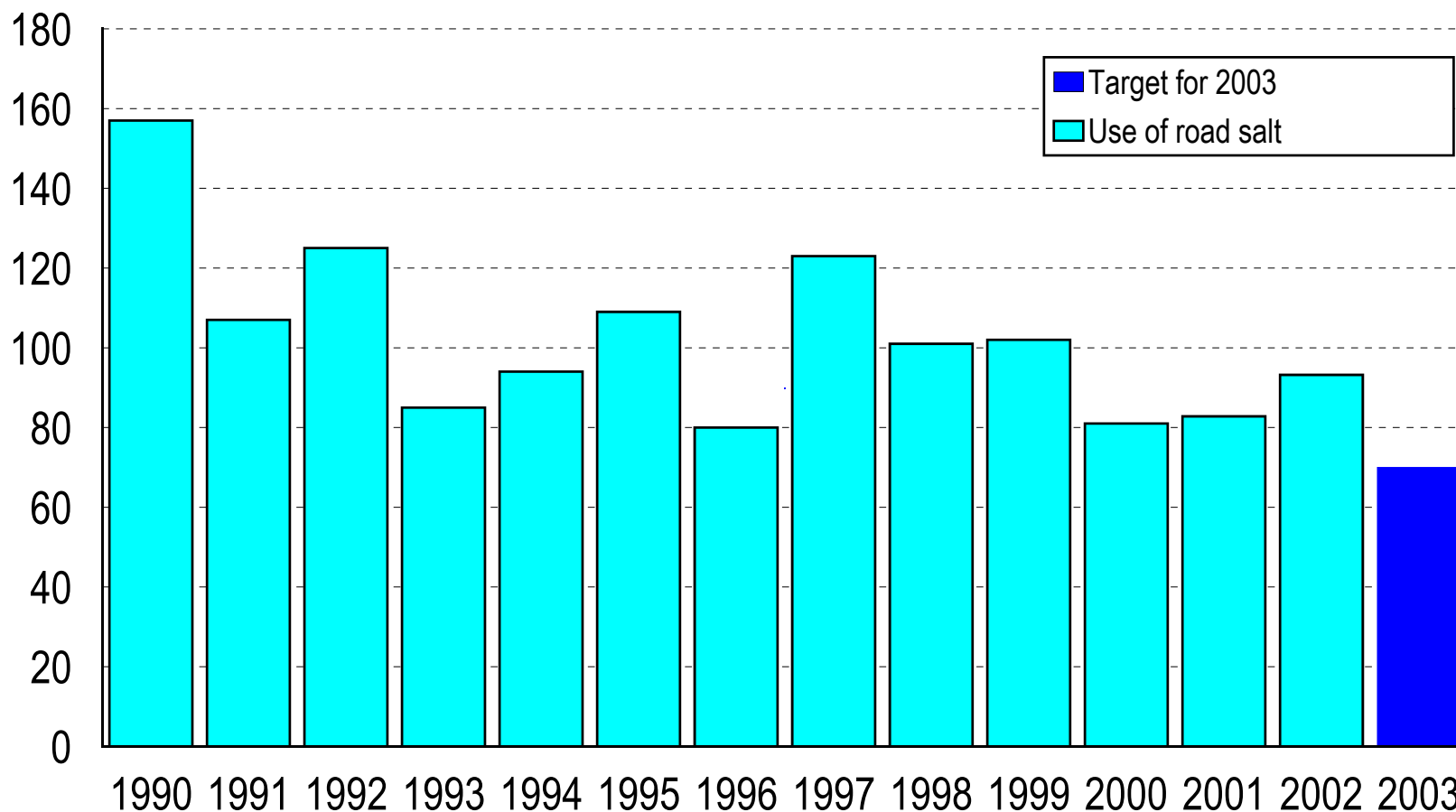


Trends in emissions from road traffic (1980=100)



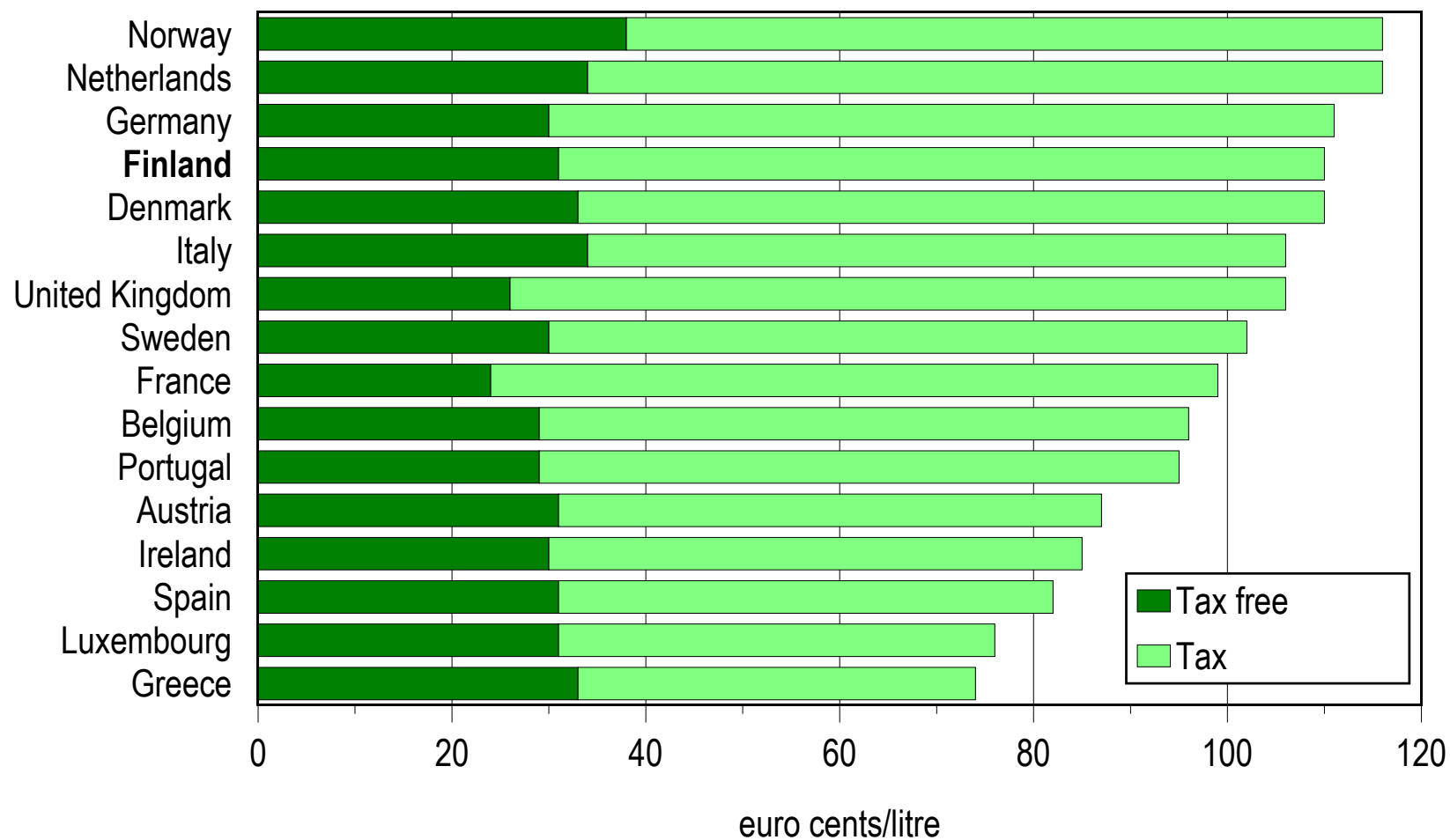


Use of road salt and target level in 2003 (tonnes)





Retail prices of petrol (95E) on 15 August 2003





Retail prices of diesel on 15 August 2003

