

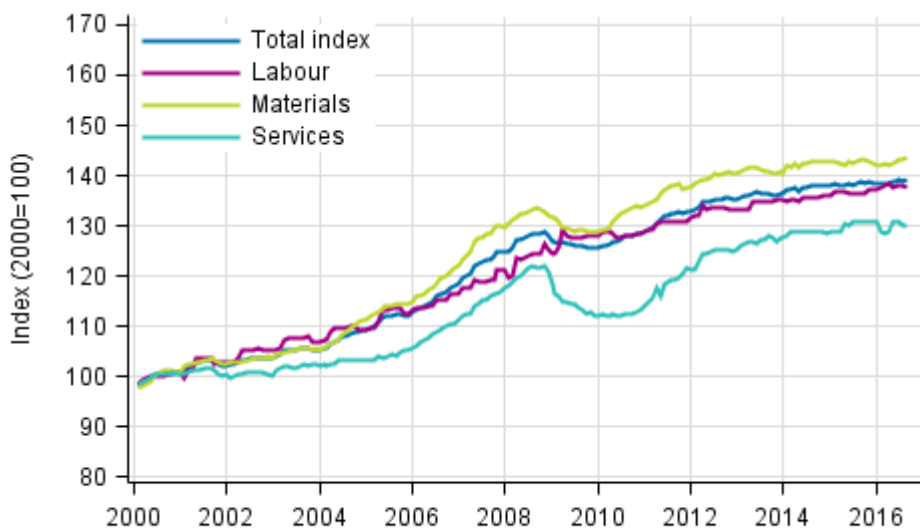
# Building cost index

2016, August

## Building costs rose by 0.6 per cent in August year-on-year

According to Statistics Finland, building costs rose by 0.6 per cent in August 2016 compared with the previous year's August. The prices of labour inputs in construction went up by 1.2 per cent and the prices of materials by 0.3 per cent. The prices of services fell by 0.2 per cent from one year ago.

### Long term development of the Building Cost Index



Source: Statistics Finland

From July to August, the total index of building costs remained nearly unchanged. The prices of labour inputs fell by 0.2 per cent. The prices of materials went up by 0.3 per cent and those of services remained on level with the previous month.

**Building cost index 2015=100, August 2016**

| Professional construction of new buildings |                             | Weights | Index | Monthly change, % | Annual change, % |
|--------------------------------------------|-----------------------------|---------|-------|-------------------|------------------|
| Total index                                |                             | 1000    | 100,5 | 0,0               | 0,6              |
| By type of cost                            | Labour inputs               | 400     | 100,8 | -0,2              | 1,2              |
|                                            | Materials                   | 510     | 100,5 | 0,3               | 0,3              |
|                                            | Services                    | 90      | 99,4  | 0,0               | -0,2             |
| By purpose of use                          | Residential building        | 440     | 100,5 | 0,1               | 0,6              |
|                                            | Other building construction | 560     | 100,5 | 0,0               | 0,7              |

# Contents

## Tables

### Appendix tables

|                                                                   |   |
|-------------------------------------------------------------------|---|
| Appendix table 1. Input indices 2015=100, August 2016.....        | 4 |
| Appendix table 2. Residential building 2015=100, August 2016..... | 5 |

## Figures

### Appendix figures

|                                                                                  |   |
|----------------------------------------------------------------------------------|---|
| Appendix figure 1. Input indices 2015=100, largest annual changes, per cent..... | 6 |
| Appendix figure 2. Index clause sub-indices P 2000=100.....                      | 6 |

# Appendix tables

**Appendix table 1. Input indices 2015=100, August 2016**

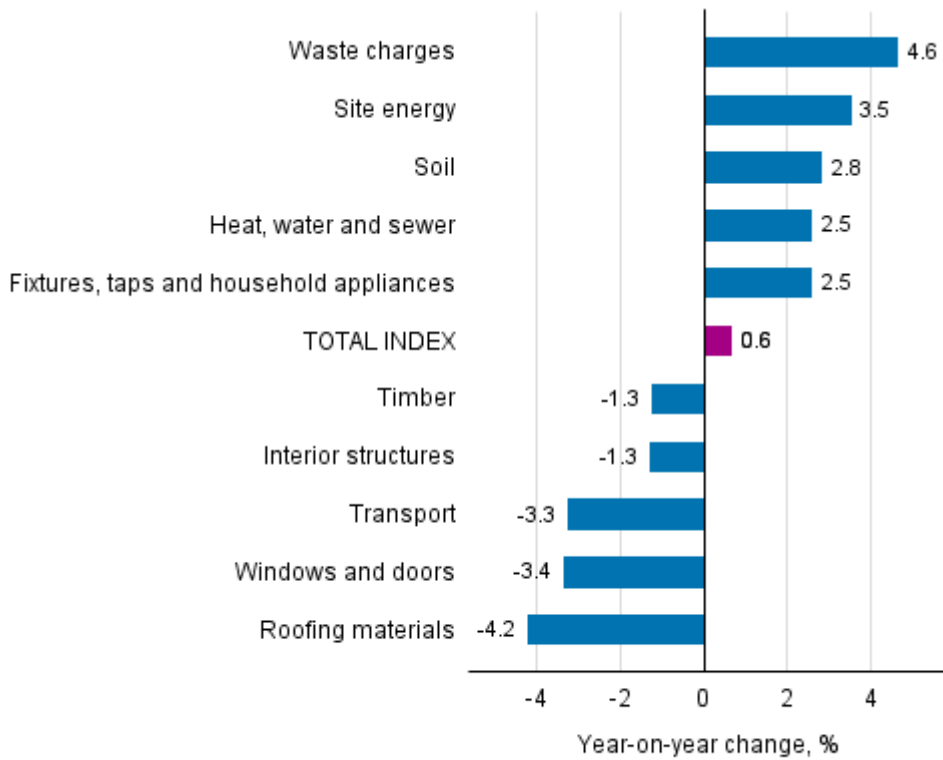
| Input heading                                              | Weights | Index | Monthly change, % | Annual change, % |
|------------------------------------------------------------|---------|-------|-------------------|------------------|
| 0 TOTAL INDEX                                              | 1000.0  | 100.5 | 0.0               | 0.6              |
| 01 LABOUR                                                  | 399.8   | 100.8 | -0.2              | 1.2              |
| 02 MATERIALS                                               | 510.0   | 100.5 | 0.3               | 0.3              |
| 02.1 AREA                                                  | 41.9    | 101.5 | 0.0               | 1.8              |
| 02.1.1 Soil                                                | 28.9    | 102.2 | 0.0               | 2.8              |
| 02.1.2 Construction site surface structures                | 13.0    | 100.0 | 0.0               | -0.4             |
| 02.2 HOUSE                                                 | 242.1   | 99.5  | 0.1               | -1.0             |
| 02.2.1 Concrete, bricks and blocks                         | 37.8    | 98.7  | -1.2              | -0.8             |
| 02.2.2 Precast concrete units                              | 54.4    | 101.5 | 1.8               | 1.1              |
| 02.2.3 Steel structures                                    | 17.3    | 101.3 | -0.5              | 1.0              |
| 02.2.4 Timber                                              | 36.0    | 99.3  | -0.4              | -1.3             |
| 02.2.5 Heat insulation                                     | 22.4    | 100.6 | 2.0               | 1.0              |
| 02.2.6 Windows and doors                                   | 59.8    | 97.7  | -0.5              | -3.4             |
| 02.2.7 Roofing materials                                   | 14.4    | 97.0  | -1.0              | -4.2             |
| 02.3 FACILITIES                                            | 93.3    | 101.9 | 0.7               | 1.6              |
| 02.3.1 Interior structures                                 | 15.9    | 98.6  | -0.9              | -1.3             |
| 02.3.2 Surface materials                                   | 41.2    | 102.5 | 0.7               | 1.9              |
| 02.3.3 Fixtures, taps and household appliances             | 36.2    | 102.7 | 1.4               | 2.5              |
| 02.4 TECHNICAL SYSTEMS                                     | 132.7   | 100.9 | 0.3               | 1.3              |
| 02.4.1 Heat, water and sewer                               | 21.4    | 102.7 | 1.4               | 2.5              |
| 02.4.2 Ventilation                                         | 28.0    | 99.2  | -0.4              | 0.1              |
| 02.4.3 Electricity, control, lighting and lift             | 83.3    | 101.7 | 0.4               | 2.2              |
| 03 SERVICES                                                | 90.2    | 99.4  | 0.0               | -0.2             |
| 03.1 SITE AND FIXTURE SERVICES                             | 76.7    | 99.3  | 0.0               | -0.1             |
| 03.1.1 Transport                                           | 27.1    | 96.1  | 0.0               | -3.3             |
| 03.1.2 Mechanical work and hoisters                        | 9.0     | 100.5 | 0.0               | 2.1              |
| 03.1.3 Site facilities, scaffolding and weather protection | 21.0    | 100.4 | 0.0               | -0.4             |
| 03.1.4 Moulding equipment and supporting                   | 1.5     | 98.1  | 0.0               | -0.5             |
| 03.1.5 Waste charges                                       | 10.8    | 104.6 | 0.0               | 4.6              |
| 03.1.6 Site energy                                         | 7.2     | 98.7  | -0.1              | 3.5              |
| 03.2 OTHER SERVICES                                        | 13.5    | 99.9  | 0.0               | -0.6             |
| 03.2.1 Insurance                                           | 4.5     | 100.2 | 0.0               | 0.2              |
| 03.2.2 Connection charges                                  | 9.0     | 99.7  | 0.0               | -1.0             |

**Appendix table 2. Residential building 2015=100, August 2016**

|                                                 | Weights | Index | Monthly change, % | Annual change, % |
|-------------------------------------------------|---------|-------|-------------------|------------------|
| 0 Total index of residential building           | 1000    | 100.5 | 0.1               | 0.4              |
| 01 New building of residential buildings        | 400     | 100.5 | 0.1               | 0.6              |
| 01.1 Detached house                             | 150     | 100.2 | -0.1              | 0.1              |
| 01.2 Block of flats                             | 250     | 100.7 | 0.2               | 0.8              |
| 02 Renovation building of residential buildings | 600     | 100.4 | 0.2               | 0.2              |
| 02.1 Dwelling repairs of residential buildings  | 240     | 101.9 | 0.6               | 1.7              |
| 02.2 Building repairs of residential buildings  | 360     | 99.5  | -0.1              | -0.7             |
| 02.2.1 Building repairs of detached houses      | 180     | 99.3  | -0.2              | -1.0             |
| 02.2.2 Building repairs of blocks of flats      | 180     | 99.7  | -0.0              | -0.4             |

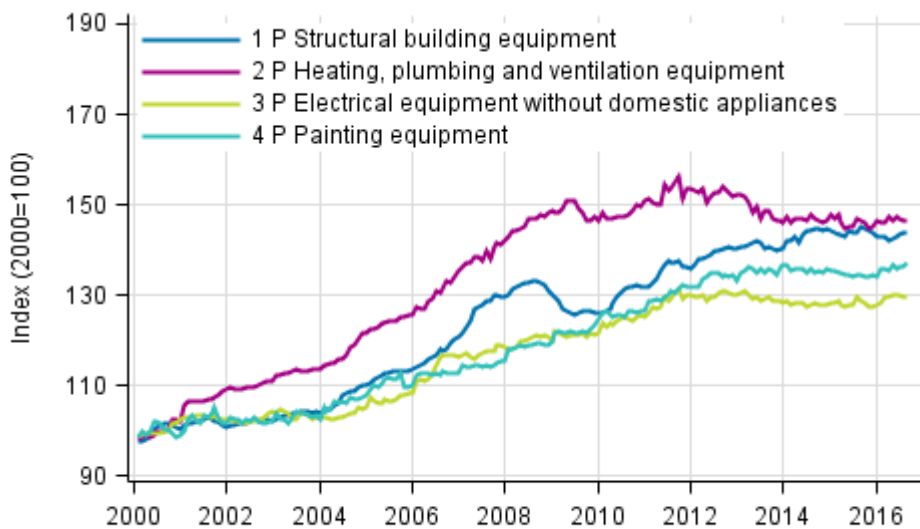
# Appendix figures

**Appendix figure 1. Input indices 2015=100, largest annual changes, per cent**



Source: Statistics Finland

**Appendix figure 2. Index clause sub-indices P 2000=100**



Source: Statistics Finland

## Inquiries

Jose Lahtinen 029 551 3776

Merja Järvinen 029 551 2458

Director in charge:

Mari Ylä-Jarkko

[rakennus.indeksit@stat.fi](mailto:rakennus.indeksit@stat.fi)

[www.stat.fi](http://www.stat.fi)

Source: Building cost index. Statistics Finland